

LEA Name : Radnor Township SD
Address : 135 S Wayne Ave
Wayne , PA 19087

County : Delaware
AUN Number : 125237603
LEA Type : SD

Annual Financial Report Accuracy Certification Statement

For Fiscal Year Ending

6/30/2016

Pennsylvania Department of Education

&

Office of Comptroller Operations

PDE-2056: Intermediate Unit

PDE-2057: School District, AVTS/CTC, Charter School,
and Special Program Jointure

CERTIFICATION: By signing this page I agree that the electronic data submitted is a complete and accurate statement of the financial operations and status of the local education agency for the fiscal year. It has been prepared in accordance with generally accepted accounting principles and established Commonwealth of PA reporting guidelines.

Chief School Administrator Signature

Date

Board Secretary Signature

Date

Penny Tansey

Contact Person

penny.tansey@rtsd.org

Contact Person E-mail Address

(610)386-6108

Ext :

Contact Person Telephone Number

(610)688-6264

Contact Person Fax Number

Audit Certification
Annual Financial Report:
For Fiscal Year Ending **6/30/2016**
(Pursuant to PA School Code Section 218(b))

LEA Name : Radnor Township SD
AUN Number : 125237603
County : Delaware

Audit Certification Due: 12/31/2016

This certification is applicable to:

- Orig. Annual Financial Report submitted to Comptroller Operations:** _____
Date

- Annual Financial Report revisions submitted on:** _____
Date

Auditing Firm:

Auditor Contact Name:

Auditor Phone:

Auditor E-mail:

CERTIFICATION: By signing this page I agree that the financial statements of the school have been properly audited as noted above pursuant to Article XXIV, and in the auditor's professional opinion, the Annual Financial Report (PDE-2057) submitted on the date referenced is materially consistent with the audited financial statements.

Chief School Administrator

Board Secretary

Signature

Date

Signature

Date

Penny Tansey

Contact Person

penny.tansey@rtsd.org

Contact Person E-mail Address

(610)386-6108

Ext :

Contact Person Telephone Number

(610)688-6264

Contact Person Fax Number

RADNOR TOWNSHIP SCHOOL DISTRICT

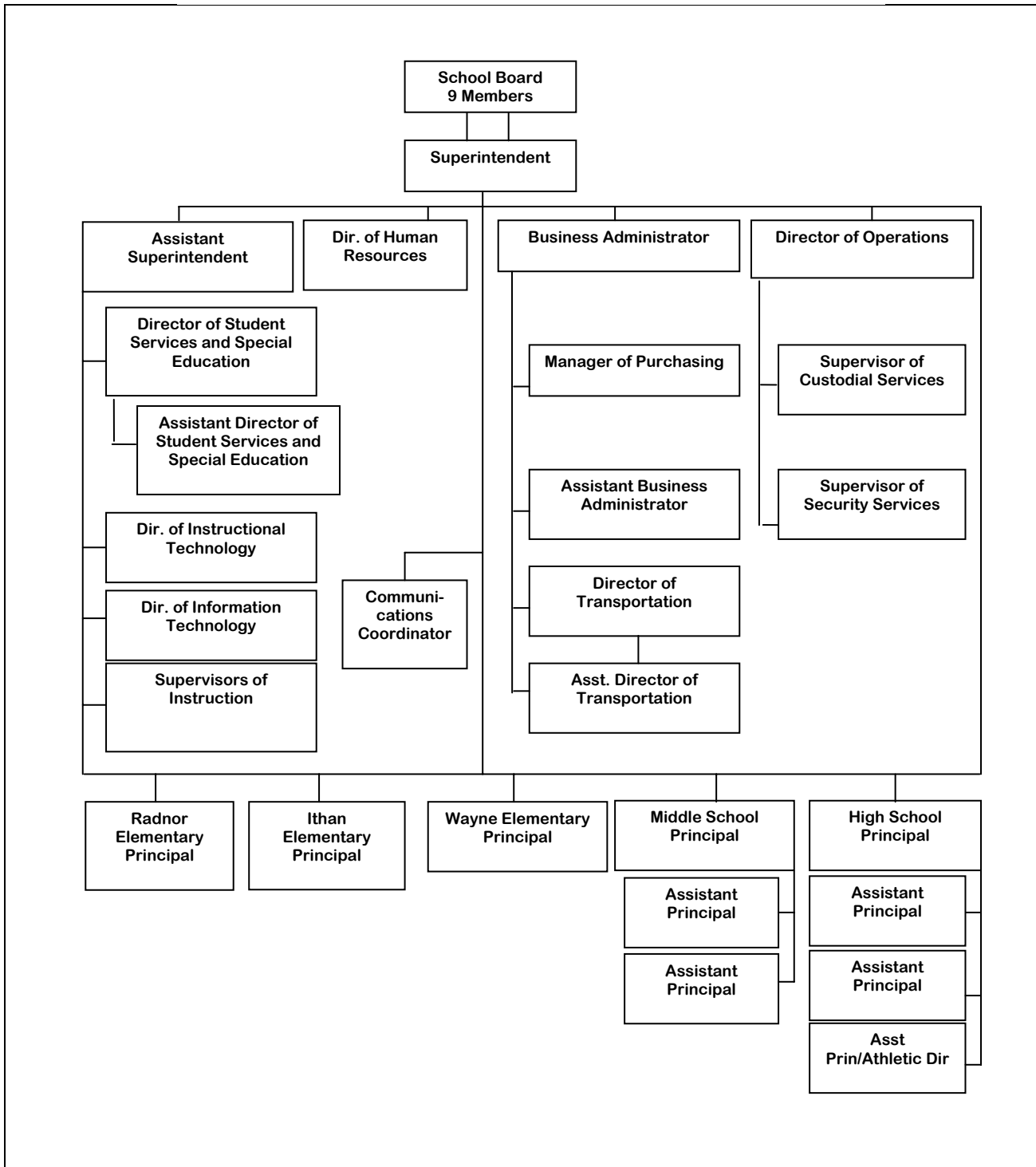
SECTION: LOCAL BOARD PROCEDURES

TITLE: ORGANIZATION CHART

ADOPTED: MARCH 25, 2008

REVISED:

008. ORGANIZATION CHART



<u>Val Number</u>	<u>Description</u>	<u>Justification</u>
16230	<p>REP Fund 51 – Net Position - Beginning of Fiscal Year must equal Prior Year AFR, Net Position - End of Year. Justifications to this error must fully explain the situation that prompted a fund balance restatement. "Auditor Adjustment" is not a sufficient justification.</p> <p>REP Fund 51 – Net Position - Beginning of Fiscal Year: \$-51,344.00 REP Fund 51, Prior Year AFR, Net Position - End of Year: \$847,410.00</p>	Last Year's REP Fund 51 did not include Food Service's pension liability
30501	<p>Revenue Detail: AFR amount must equal or exceed PDE FAI System amount.</p> <p>7311, AFR Rev Detail: 444180.18 7311, PDE FAI System: \$450,829.29</p>	The variance is \$6,649.11 which was booked as a revenue and receivable in the 1415 AFR and when received during the 1516 fiscal year was posted to 10-0142 to relieve the receivable.
30630	<p>Revenue Detail: Current Tax Revenue amount cannot exceed 30% variance from prior year amount. Correct the data or enter a justification.</p> <p>6140, Current AFR Rev Detail: \$132,402.35 6140, Prior AFR Rev Detail: \$71,387.73</p>	PRIOR YEAR ONLY INCLUDED 3 QUARTERS OF LOCAL SERVICE TAX SO THE CURRENT YEAR INCLUDES A QUARTER FROM THE PRIOR YEAR ALONG WITH THE 4 QUARTERS FOR THE CURRENT YEAR.
30650	<p>Revenue Detail: Current Tax Revenue amount cannot exceed 30% variance from prior year amount. Correct the data or enter a justification.</p> <p>6143, Current AFR Rev Detail: \$132,402.35 6143, Prior AFR Rev Detail: \$71,387.73</p>	PRIOR YEAR ONLY INCLUDED 3 QUARTER OF LOCAL SERVICE TAX SO THE CURRENT YEAR INCLUDES A QUARTER FROM THE PRIOR YEAR ALONG WITH THE 4 QUARTERS FOR THE CURRENT YEAR.
42420	<p>Expenditure Detail: Total current year 2700-513 expenditure varies from prior year by 10%. Correct the data or enter a justification.</p> <p>2700-513, AFR Exp Detail: \$37,462.60 2700-513, PY AFR Amount: \$28,848.86</p>	CHANGE IN STUDENT TRANSPORTATION NEEDS
50470	<p>SESS - 2440 Nursing Services: SESS Schedule amounts for Special Education vary from prior year by 40% or more. Correct the data or enter a justification.</p> <p>SESS Schedule 2440: \$342,489.32 Prior Year SESS Schedule 2440: \$88,843.12</p>	The District started outsourcing for one on one nursing services both in house and at St Edmonds Home for Children

Amounts Expressed in Whole Dollars	<u>General Fund</u> <u>(10)</u>	<u>Public Purpose Trust</u> <u>(27)</u>	<u>Other Compt Approved</u> <u>(28)</u>	<u>Athletic / Activity</u> <u>(29)</u>	<u>Capital Reserve (690.</u> <u>1850)</u> <u>(31)</u>
Assets And Deferred Outflows Of Resources					
Assets					
0100 Cash and Cash Equivalents	21,420,788			6,843	
0110 Investments	4,199,822				
0120 Taxes Receivable	1,075,907				
0130 Due From Other Funds	54,770				
0141 Due From Other Governments					
0142 State Revenue Receivable	2,339,659				
0143 Federal Revenue Receivable	247,676				
0145 Other Intergovernmental Revenue Receivable					
0146 Due from Primary Government					
0147 Due from Component Unit					
0150 Other Receivables	1,619,093			2,925	
0170 Inventories					
0180 Prepaid Expenses (Expenditures)					
0190 Other Current Assets					
Total Assets	\$30,957,715			\$9,768	
0910 Deferred Outflows of Resources					
Total Assets And Deferred Outflows Of Resources	\$30,957,715			\$9,768	

Amounts Expressed in Whole Dollars

	<u>Capital Reserve (1431)</u> <u>(32)</u>	<u>Other Capital Projects</u> <u>Fund</u> <u>(39)</u>	<u>Debt Service</u> <u>(40)</u>	<u>Permanent</u> <u>(90)</u>	<u>Total Governmental</u> <u>Funds</u>
Assets And Deferred Outflows Of Resources					
Assets					
0100 Cash and Cash Equivalents	3,528,526		769		24,956,926
0110 Investments			1,387,652		5,587,474
0120 Taxes Receivable					1,075,907
0130 Due From Other Funds					54,770
0141 Due From Other Governments					
0142 State Revenue Receivable					2,339,659
0143 Federal Revenue Receivable					247,676
0145 Other Intergovernmental Revenue Receivable					
0146 Due from Primary Government					
0147 Due from Component Unit					
0150 Other Receivables					1,622,018
0170 Inventories					
0180 Prepaid Expenses (Expenditures)					
0190 Other Current Assets					
Total Assets	\$3,528,526		\$1,388,421		\$35,884,430
0910 Deferred Outflows of Resources					
Total Assets And Deferred Outflows Of Resources	\$3,528,526		\$1,388,421		\$35,884,430

Amounts Expressed in Whole Dollars

	<u>General Fund</u> <u>(10)</u>	<u>Public Purpose Trust</u> <u>(27)</u>	<u>Other Compt Approved</u> <u>(28)</u>	<u>Athletic / Activity</u> <u>(29)</u>	<u>Capital Reserve (690.</u> <u>1850)</u> <u>(31)</u>
Liabilities And Deferred Inflows Of Resources And Fund Balances					
Liabilities					
0400 Due to Other Funds					
0411 Due to Other Governments					
0412 Due to Primary Government					
0413 Due to Component Unit					
0420 Accounts Payable	1,979,932				
0430 Contracts Payable					
0440 Current Portion of Long-Term Debt					
0450 Short-Term Payables					
0461 Accrued Salaries and Benefits	9,996,392				
0462 Payroll Deductions and Withholding					
0480 Unearned Revenues					
0490 Other Current Liabilities	231,824				
Total Liabilities	\$12,208,148				
0950 Deferred Inflows of Resources		806,056			
Fund Balances					
0810 Nonspendable Fund Balance					
0820 Restricted Fund Balance					
0830 Committed Fund Balance	13,659,686			9,768	
0840 Assigned Fund Balance					
0850 Unassigned Fund Balance	4,283,825				
Total Fund Balances	\$17,943,511			\$9,768	
Total Liabilities, Deferred Inflows Of Resources And Fund Balances	\$30,957,715			\$9,768	

Amounts Expressed in Whole Dollars

	<u>Capital Reserve (1431)</u> <u>(32)</u>	<u>Other Capital Projects</u> <u>Fund</u> <u>(39)</u>	<u>Debt Service</u> <u>(40)</u>	<u>Permanent</u> <u>(90)</u>	<u>Total Governmental</u> <u>Funds</u>
Liabilities And Deferred Inflows Of Resources And Fund Balances					
Liabilities					
0400 Due to Other Funds					
0411 Due to Other Governments					
0412 Due to Primary Government					
0413 Due to Component Unit					
0420 Accounts Payable	54,610				2,034,542
0430 Contracts Payable					
0440 Current Portion of Long-Term Debt					
0450 Short-Term Payables					
0461 Accrued Salaries and Benefits					9,996,392
0462 Payroll Deductions and Withholding					
0480 Unearned Revenues					
0490 Other Current Liabilities					231,824
Total Liabilities	\$54,610				\$12,262,758
0950 Deferred Inflows of Resources					806,056
Fund Balances					
0810 Nonspendable Fund Balance					
0820 Restricted Fund Balance	3,473,916		1,388,421		4,862,337
0830 Committed Fund Balance					13,669,454
0840 Assigned Fund Balance					
0850 Unassigned Fund Balance					4,283,825
Total Fund Balances	\$3,473,916		\$1,388,421		\$22,815,616
Total Liabilities, Deferred Inflows Of Resources And Fund Balances	\$3,528,526		\$1,388,421		\$35,884,430

Amounts Expressed in Whole Dollars	<u>General Fund</u> <u>(10)</u>	<u>Public Purpose Trust</u> <u>(27)</u>	<u>Other Compt Approved</u> <u>(28)</u>	<u>Athletic / Activity</u> <u>(29)</u>	<u>Capital Reserve (690.</u> <u>1850)</u> <u>(31)</u>
Revenues					
6000 Revenue from Local Sources	74,158,445			29,045	
7000 Revenue from State Sources	13,585,999				
8000 Revenue from Federal Sources	545,063				
Total Revenues	\$88,289,507			\$29,045	
Expenditures					
1000 Instruction	50,982,186				
2000 Support Services	28,179,802				
3000 Operation of Non-Instructional Services	1,213,986			61,863	
4000 Facilities Acquisition, Construction and Improvement Services					
5110 Debt Service	5,249,075				
5130 Refund of Prior Year Revenues / Receipts					
5140 Short-Term Borrowing – Interest and Costs					
Total Expenditures	\$85,625,049			\$61,863	
Excess (Deficiency) Of Revenues Over Expenditures	\$2,664,458			(\$32,818)	
Other Financing Sources (Uses)					
9110 Face Value of Bonds Issued					
9120 Proceeds from Refunding of Bonds					
9130 Bond Premiums					
9200 Proceeds from Extended-Term Financing					
9300 Interfund Transfers - IN				25,000	
9400 Sale of or Compensation for Loss of Fixed Assets	1,034				
9710 Transfers from Component Units					
9720 Transfers from Primary Governments					
9910 Other Financing Sources Not Listed in the 9000 Series					
9990 Insurance Recoveries	90,000				
5120 Debt Service – Refunded Bonds					
5150 Bond Discounts					
5200 Interfund Transfers – Out	6,172,614				
5300 Transfers Out to Component Units/Primary Governments					
Total Other Financing Sources (Uses)	(\$6,081,580)			\$25,000	

Amounts Expressed in Whole Dollars	<u>Capital Reserve (1431)</u> <u>(32)</u>	<u>Other Capital Projects</u> <u>Fund</u> <u>(39)</u>	<u>Debt Service</u> <u>(40)</u>	<u>Permanent</u> <u>(90)</u>	<u>Total Governmental</u> <u>Funds</u>
Revenues					
6000 Revenue from Local Sources	415,969	1,153	192,417		74,797,029
7000 Revenue from State Sources					13,585,999
8000 Revenue from Federal Sources					545,063
Total Revenues	\$415,969	\$1,153	\$192,417		\$88,928,091
Expenditures					
1000 Instruction					50,982,186
2000 Support Services	2,432,905				30,612,707
3000 Operation of Non-Instructional Services					1,275,849
4000 Facilities Acquisition, Construction and Improvement Services	3,206,050	769,731			3,975,781
5110 Debt Service					5,249,075
5130 Refund of Prior Year Revenues / Receipts					
5140 Short-Term Borrowing – Interest and Costs					
Total Expenditures	\$5,638,955	\$769,731			\$92,095,598
Excess (Deficiency) Of Revenues Over Expenditures	(\$5,222,986)	(\$768,578)	\$192,417		(\$3,167,507)
Other Financing Sources (Uses)					
9110 Face Value of Bonds Issued					
9120 Proceeds from Refunding of Bonds					
9130 Bond Premiums					
9200 Proceeds from Extended-Term Financing					
9300 Interfund Transfers - IN	5,898,223		249,391		6,172,614
9400 Sale of or Compensation for Loss of Fixed Assets					1,034
9710 Transfers from Component Units					
9720 Transfers from Primary Governments					
9910 Other Financing Sources Not Listed in the 9000 Series					
9990 Insurance Recoveries	104,808				194,808
5120 Debt Service – Refunded Bonds					
5150 Bond Discounts					
5200 Interfund Transfers – Out					6,172,614
5300 Transfers Out to Component Units/Primary Governments					
Total Other Financing Sources (Uses)	\$6,003,031		\$249,391		\$195,842

Amounts Expressed in Whole Dollars	<u>General Fund</u> <u>(10)</u>	<u>Public Purpose Trust</u> <u>(27)</u>	<u>Other Compt Approved</u> <u>(28)</u>	<u>Athletic / Activity</u> <u>(29)</u>	<u>Capital Reserve (690.</u> <u>1850)</u> <u>(31)</u>
Special And Extraordinary Items					
9920 Special Items – Gains					
9930 Extraordinary Items – Gains					
5520 Special Items – Losses					
5530 Extraordinary Items – Losses					
Net Change In Fund Balances	(\$3,417,122)			(\$7,818)	
Fund Balance					
0001 Fund Balance - Beginning of Fiscal Year	21,360,633			17,586	
Fund Balance - End Of Year	\$17,943,511			\$9,768	

Amounts Expressed in Whole Dollars	<u>Capital Reserve (1431)</u> <u>(32)</u>	<u>Other Capital Projects</u> <u>Fund</u> <u>(39)</u>	<u>Debt Service</u> <u>(40)</u>	<u>Permanent</u> <u>(90)</u>	<u>Total Governmental</u> <u>Funds</u>
Special And Extraordinary Items					
9920 Special Items – Gains					
9930 Extraordinary Items – Gains					
5520 Special Items – Losses					
5530 Extraordinary Items – Losses					
Net Change In Fund Balances	\$780,045	(\$768,578)	\$441,808		(\$2,971,665)
Fund Balance					
0001 Fund Balance - Beginning of Fiscal Year	2,693,871	768,578	946,613		25,787,281
Fund Balance - End Of Year	\$3,473,916		\$1,388,421		\$22,815,616

Amounts Expressed in Whole Dollars	<u>Food Service</u> <u>(51)</u>	<u>Child Care</u> <u>Operations</u> <u>(52)</u>	<u>Other Enterprise</u> <u>(58)</u>	<u>TOTAL</u>	<u>Internal Service</u> <u>(60)</u>
Assets And Deferred Outflows Of Resources					
Current Assets					
0100 Cash and Cash Equivalents	660,008			660,008	
0110 Investments	149,274			149,274	
0130 Due From Other Funds					
0141 Due From Other Governments					
0142 State Revenue Receivable	1,740			1,740	
0143 Federal Revenue Receivable	12,940			12,940	
0146 Due from Primary Government					
0147 Due from Component Unit					
0150 Other Receivables	5,192			5,192	
0170 Inventories	31,561			31,561	
0180 Prepaid Expenses (Expenditures)					2,563,210
0190 Other Current Assets					
Total Current Assets	\$860,715			\$860,715	\$2,563,210
Noncurrent Assets					
0211 Land					
0212 Site Improvements (Net)					
0220 Buildings and Building Improvements (Net)					
0230 Machinery, Equipment and Furniture (Net)	222,938			222,938	
0250 Construction in Progress					
0260 Long Term Prepayments					
0290 Other Noncurrent Assets					
Total Noncurrent Assets	\$222,938			\$222,938	
0910 Deferred Outflows of Resources	174,216			174,216	
Total Assets And Deferred Outflows Of Resources	\$1,257,869			\$1,257,869	\$2,563,210

Amounts Expressed in Whole Dollars	<u>Food Service</u> <u>(51)</u>	<u>Child Care</u> <u>Operations</u> <u>(52)</u>	<u>Other Enterprise</u> <u>(58)</u>	<u>TOTAL</u>	<u>Internal Service</u> <u>(60)</u>
Liabilities And Deferred Inflows Of Resources And Net Position					
Current Liabilities					
0400 Due to Other Funds	54,770			54,770	
0411 Due to Other Governments					
0413 Due to Component Unit					
0420 Accounts Payable	14,234			14,234	
0430 Contracts Payable					
0440 Current Portion of Long-Term Debt					
0450 Short-Term Payables					
0461 Accrued Salaries and Benefits					
0462 Payroll Deductions and Withholding					
0480 Unearned Revenues	81,229			81,229	
0490 Other Current Liabilities					
Total Current Liabilities	\$150,233			\$150,233	
Noncurrent Liabilities					
0510 Bonds Payable					
0520 Extended-Term Financing Agreements Payable					
0530 Lease-Purchase Obligations					
0540 Accumulated Compensated Absences					
0550 Authority Lease Obligations					
0560 Other Post-Employment Benefits (OPEB)					
0570 Net Pension Liability	1,372,668			1,372,668	
0599 Other Long-Term Liabilities					
Total Noncurrent Liabilities	\$1,372,668			\$1,372,668	
Total Liabilities	\$1,522,901			\$1,522,901	
0950 Deferred Inflows of Resources					
Net Position					
0791 Invested in Capital Assets, Net of Related Debt	222,938			222,938	
0008 Restricted Net Position (0792 – 0798)					
0799 Unrestricted Net Position	(487,970)			(487,970)	2,563,210
Total Net Position	(\$265,032)			(\$265,032)	\$2,563,210
Total Liabilities And Deferred Inflows Of Resources And Net Position	\$1,257,869			\$1,257,869	\$2,563,210

Amounts Expressed in Whole Dollars	<u>Food Service</u> <u>(51)</u>	<u>Child Care Operations</u> <u>(52)</u>	<u>Other Enterprise</u> <u>(58)</u>	<u>TOTAL</u>	<u>Internal Service</u> <u>(60)</u>
Operating Revenues					
6600 Food Service Revenue	1,421,130			1,421,130	
0071 Charges for Services					7,161,769
0072 Other Operating Revenue					
Total Operating Revenues	\$1,421,130			\$1,421,130	\$7,161,769
Operating Expenses					
100 Personnel Services – Salaries	427,371			427,371	
200 Personnel Services – Employee Benefits	564,143			564,143	5,970,850
300 Purchased Professional and Technical Services	3,563			3,563	628,006
400 Purchased Property Services	48,876			48,876	
500 Other Purchased Services	95,923			95,923	
600 Supplies	851,553			851,553	
740 Depreciation	20,566			20,566	
810 Dues and Fees					
890 Miscellaneous Expenditures					
Total Operating Expenses	\$2,011,995			\$2,011,995	\$6,598,856
Operating Income (Loss)	(\$590,865)			(\$590,865)	\$562,913
Non Operating Revenues (Expenses)					
6500 Earnings on Investments	2,110			2,110	11,296
6920 Contributions and Donations from Private Sources					
6930 Gains or Losses on Sale of Fixed Assets					
6991 Refunds of a Prior Year Expenditure					
7000 Revenue from State Sources	97,200			97,200	
8000 Revenue from Federal Sources	277,867			277,867	
820 Claims and Judgments Against the LEA					
830 Interest					
TOTAL Non Operating Revenues (Expenses)	\$377,177			\$377,177	\$11,296
Income (Loss) Before Contributions And Transfers	(\$213,688)			(\$213,688)	\$574,209

Amounts Expressed in Whole Dollars	<u>Food Service</u> <u>(51)</u>	<u>Child Care Operations</u> <u>(52)</u>	<u>Other Enterprise</u> <u>(58)</u>	<u>TOTAL</u>	<u>Internal Service</u> <u>(60)</u>
Contributions, Transfers, and Special and Extraordinary Items					
5200 Interfund Transfers – Out					
5300 Transfers Out to Component Units/Primary Governments					
5520 Special Items – Losses					
5530 Extraordinary Items – Losses					
9300 Interfund Transfers - IN					
9500 Capital Contributions					
9700 Transfers IN From Component Units/Primary Governments					
9920 Special Items – Gains					
9930 Extraordinary Items – Gains					
Change In Net Position	(\$213,688)			(\$213,688)	\$574,209
0002 Net Position - Beginning of Fiscal Year	(51,344)			(51,344)	1,989,001
0003 Accounting Changes / Residual Equity Transfers					
Net Position - End Of Year	(\$265,032)			(\$265,032)	\$2,563,210

Amounts Expressed in Whole Dollars	<u>Food Service</u> <u>(51)</u>	<u>Child Care Operations</u> <u>(52)</u>	<u>Other Enterprise</u> <u>(58)</u>	<u>TOTAL</u>	<u>Internal Service(60)</u>
Cash Flows From Operating Activities					
0011 Cash Receipts From Users	1,424,807			1,424,807	
0012 Cash Receipts From Assessments Made to Other Funds					7,161,769
0013 Cash Receipts From Earnings on Investments					
0014 Cash Receipts From Other Operating Revenue					
0015 Cash Payments To Employees For Services	671,199			671,199	
0016 Cash Payments For Insurance Claims					6,545,059
0017 Cash Payments To Suppliers For Goods and Services	930,064			930,064	
0018 Cash Payments For Other Operating Expenses					628,006
Net Cash Provided By (Used For) Operating Activities	(\$176,456)			(\$176,456)	(\$11,296)
Cash Flows From Non-Capital Financing Activities					
0021 Receipts From Local Sources - 6000					
0022 Receipts From State Sources - 7000	97,109			97,109	
0023 Receipts From Federal Sources -8000	215,536			215,536	
0024 Notes and Loans Received (Repaid)					
0025 Interest Paid on Notes/Loans - 5100-830					
0026 Operating Transfers In (Out)/Residual Equity Trans					
0027 Operating Transfers In (Out) Primary Government / Comp Unit					
0028 Receipts From Refund of Prior Year Expenditures - 6991					
0029 Special and Extraordinary Gains (losses)					
Net Cash Prov By (Used for) Non-Capital Financing Activities	\$312,645			\$312,645	
Cash Flows From Capital and Related Financing Activities					
0031 Payments For Fac Acq, Const, and Imp - 4000	(10,837)			(10,837)	
0032 Gain / (Loss) on Sale of Fixed Assets - 6930					
0033 Proceeds From Extended Term Financing - 9200					
0034 Principal Paid on Financing Agreements					
0035 Interest Paid on Financing Agreements - 5100-830					
0036 (Inc) Dec in Contributed Capital					
Net Cash Prov By (Used for) Capital and Related Financing Activities	(\$10,837)			(\$10,837)	
Cash Flows From Investing Activities					
0041 Earnings on Investments - 6500	2,110			2,110	11,296
0042 Purchase of Inv Securities / Deposits to Inv Pools					
0043 Receipts From Investment Pool Withdrawals					
0044 Proceeds from Sale and Maturity of Inv Securities					
0045 Loans Received (Paid)					
Net Cash Prov By (Used for) Investing Activities	\$2,110			\$2,110	\$11,296

	<u>Food Service</u> <u>(51)</u>	<u>Child Care Operations</u> <u>(52)</u>	<u>Other Enterprise</u> <u>(58)</u>	<u>TOTAL</u>	<u>Internal Service</u> <u>(60)</u>
Net Increase (Decrease) in Cash Flows	127,462			127,462	
0004 Cash and Cash Equivalents Beginning of Year	532,546			532,546	
Cash and Cash Equivalents at Year End	\$660,008			\$660,008	
<hr/>					
Reconciliation of Operating Income (Loss) To Net Cash Provided by (Used For) Operating Activities					
0005 Operating Income (Loss) per REP	(590,865)			(590,865)	562,913
Adjustments					
0051 Depreciation and Net Amortization	20,566			20,566	
0052 Provision for Uncollectible Accounts					
0053 Other Adjustments	60,826			60,826	
Effect of Changes in Assets, Liabilities, Deferred Outflows and Deferred Inflows					
0054 (Inc) Dec In Accounts Receivable (0120-0150)	1,494			1,494	
0055 Advances to Other Funds (0160)					
0056 (Inc) Dec in Inventories (0170)	15,504			15,504	
0057 (Inc) Dec in Prepaid Expenses (0180)					(574,209)
0058 (Inc) Dec in Other Current or Noncurrent Assets					
0064 Deferred Outflows (0910)	(64,301)			(64,301)	
0059 Inc (Dec) in Accounts Payable (0400-0450)	(6,479)			(6,479)	
0060 Inc (Dec) in Accrued Salaries/Benefits (0461)					
0065 Inc (Dec) in Net Pension Liabilities (0570)	431,293			431,293	
0066 Inc (Dec) in Other Postemp Benefit Oblig (0560)					
0061 Inc (Dec) in Payroll Deductions/Withholding (0462)					
0062 Inc (Dec) in Unearned Revenue (0480)	2,183			2,183	
0063 Inc (Dec) in Other Current or Noncurrent Liabilities	20,617			20,617	
0067 Deferred Inflows (0950)	(67,294)			(67,294)	
Total Adjustments	\$414,409			\$414,409	(\$574,209)
Cash Provided By (Used for) Total	(\$176,456)			(\$176,456)	(\$11,296)

COMBINED STATEMENT OF CASH FLOWS
SCHEDULE OF NONCASH INVESTING, CAPITAL, AND FINANCING ACTIVITIES

Explanation of Transaction and Balance Sheet Effect	Amount
Total	

LEA : 125237603 Radnor Township SD

Printed 11/21/2016 8:33:37 AM

Amounts Expressed in Whole Dollars

	<u>Private Purpose Trust</u> (71)	<u>Investment Trust</u> (72)	<u>Pension Trust</u> (73)	<u>Activity</u> (81)
Assets And Deferred Outflows Of Resources				
Assets				
0100 Cash and Cash Equivalents	109,013			37,576
0110 Investments	255,000			
0130 Due From Other Funds				
0147 Due from Component Unit				
0150 Other Receivables				
0170 Inventories				
0180 Prepaid Expenses (Expenditures)				
0190 Other Current Assets				
0220 Buildings and Building Improvements (Net)				
0230 Machinery, Equipment and Furniture (Net)				
Total Assets	\$364,013			\$37,576
0910 Deferred Outflows of Resources				
Total Assets And Deferred Outflows Of Resources	\$364,013			\$37,576

LEA : 125237603 Radnor Township SD

Printed 11/21/2016 8:33:37 AM

Amounts Expressed in Whole Dollars

	<u>Other Agency</u> <u>(89)</u>	<u>Discrete Component Units</u> <u>(98)</u>	<u>Discrete Component Units</u> <u>(99)</u>	<u>Total Fiduciary Funds</u>
Assets And Deferred Outflows Of Resources				
Assets				
0100 Cash and Cash Equivalents				146,589
0110 Investments				255,000
0130 Due From Other Funds				
0147 Due from Component Unit				
0150 Other Receivables				
0170 Inventories				
0180 Prepaid Expenses (Expenditures)				
0190 Other Current Assets				
0220 Buildings and Building Improvements (Net)				
0230 Machinery, Equipment and Furniture (Net)				
Total Assets				\$401,589
0910 Deferred Outflows of Resources				
Total Assets And Deferred Outflows Of Resources				\$401,589

LEA : 125237603 Radnor Township SD

Printed 11/21/2016 8:33:37 AM

Amounts Expressed in Whole Dollars	<u>Private Purpose Trust</u> (71)	<u>Investment Trust</u> (72)	<u>Pension Trust</u> (73)	<u>Activity</u> (81)
Liabilities, Deferred Inflows Of Resources And Net Position				
Liabilities				
0400 Due to Other Funds				
0411 Due to Other Governments				
0412 Due to Primary Government				
0413 Due to Component Unit				
0420 Accounts Payable	1,000			
0430 Contracts Payable				
0450 Short-Term Payables				
0461 Accrued Salaries and Benefits				
0462 Payroll Deductions and Withholding				
0480 Unearned Revenues				
0490 Other Current Liabilities				
Total Liabilities	\$1,000			
0950 Deferred Inflows of Resources				37,576
Net Position				
0791 Invested in Capital Assets, Net of Related Debt				
0009 Restricted Net Position (0792 – 0798)	363,013			
0799 Unrestricted Net Position				
Total Net Position	\$363,013			
Total Liabilities, Deferred Inflows Of Resources And Net Position	\$364,013			\$37,576

LEA : 125237603 Radnor Township SD

Printed 11/21/2016 8:33:37 AM

Amounts Expressed in Whole Dollars	<u>Other Agency</u> (89)	<u>Discrete Component Units</u> (98)	<u>Discrete Component Units</u> (99)	<u>Total Fiduciary Funds</u>
Liabilities, Deferred Inflows Of Resources And Net Position				
Liabilities				
0400 Due to Other Funds				
0411 Due to Other Governments				
0412 Due to Primary Government				
0413 Due to Component Unit				
0420 Accounts Payable				1,000
0430 Contracts Payable				
0450 Short-Term Payables				
0461 Accrued Salaries and Benefits				
0462 Payroll Deductions and Withholding				
0480 Unearned Revenues				
0490 Other Current Liabilities				
Total Liabilities				\$1,000
0950 Deferred Inflows of Resources				37,576
Net Position				
0791 Invested in Capital Assets, Net of Related Debt				
0009 Restricted Net Position (0792 – 0798)				363,013
0799 Unrestricted Net Position				
Total Net Position				\$363,013
Total Liabilities, Deferred Inflows Of Resources And Net Position				\$401,589

Amounts Expressed in Whole Dollars	<u>Private Purpose Trust</u> <u>(71)</u>	<u>Investment Trust</u> <u>(72)</u>	<u>Pension Trust</u> <u>(73)</u>	<u>Discrete Component</u> <u>Units</u> <u>(98)</u>	<u>Discrete Component</u> <u>Units</u> <u>(99)</u>	<u>Total Fiduciary</u> <u>Funds</u>
Additions						
0091 Gifts and Contributions	1,791					1,791
0092 Other Additions						
Deductions						
0093 Scholarships Awarded	13,800					13,800
0094 Other Deductions						
Change In Net Position	(\$12,009)					(\$12,009)
0006 Net Position – Beginning of Fiscal Year	375,022					375,022
0007 Net Position Held in Trust for Pension Benefits						
Net Position - End of Fiscal Year	\$363,013					\$363,013

	<u>Revenue Reported In Current Year</u>	<u>Current Year Tax Accrual</u>	<u>Prior Year Tax Accrual</u>	<u>Taxes Collected In Current Year</u>
<u>Revenue from Local Sources</u>				
6111 Current Real Estate Taxes	66,631,094.85			66,631,094.85
6112 Interim Real Estate Taxes	531,566.33			531,566.33
6113 Public Utility Realty Taxes	79,579.33			79,579.33
6114 Payments in Lieu of Current Taxes - State / Local	324,957.16			324,957.16
6143 Current Act 511 Local Services Taxes	132,402.35			132,402.35
6153 Current Act 511 Real Estate Transfer Taxes	1,538,751.50	162,247.82		1,376,503.68
6411 Delinquent Real Estate Taxes	1,255,748.86	107,602.70		1,148,146.16
6500 Earnings on Investments	161,315.30			
6700 Revenues from LEA Activities	34,537.00			
6832 Federal IDEA Revenue Received as Pass Through	480,261.00			
6910 Rentals	170,839.50			
6920 Contributions and Donations from Private Sources	107,521.72			
6944 Receipts from Other LEAs in Pennsylvania - Education	2,549,825.28			
6991 Refunds of a Prior Year Expenditure	7,862.40			
6999 Other Revenues Not Specified Above	152,182.77			
TOTAL Revenue from Local Sources	\$74,158,445.35	\$269,850.52		\$70,224,249.86

**Revenue Reported
In Current Year**

Revenue from State Sources

7110 Basic Education Funding	1,934,675.12		
7160 Tuition for Orphans Subsidy	200,226.13		
7271 Special Education funds for School-Aged Pupils	1,749,846.99		
7311 Pupil Transportation Subsidy	444,180.18		
7312 Nonpublic and Charter School Pupil Transportation Subsidy	433,125.00		
7320 Rental and Sinking Fund Payments / Building Reimbursement Subsidy	84,046.89		
7330 Health Services (Medical, Dental, Nurse, Act 25)	178,510.84		
7340 State Property Tax Reduction Allocation	1,453,130.42		
7505 Ready to Learn Block Grant	96,816.00		
7599 Other State Revenue Not Listed Elsewhere in the 7000 Series	118,460.71		
7810 State Share of Social Security and Medicare Taxes	1,549,602.27		
7820 State Share of Retirement Contributions	5,343,378.22		
TOTAL Revenue from State Sources	\$13,585,998.77		

**Revenue Reported
In Current Year**

Revenue from Federal Sources

8514 NCLB, Title I - Improving the Academic Achievement of the Disadvantaged	190,352.46		
8515 NCLB, Title II - Preparing, Training and Recruiting High Quality Teachers and Principals	82,151.09		
8516 NCLB, Title III - Language Instruction for Limited English Proficient and Immigrant Students	25,882.15		
8731 ARRA - Build America Bonds	78,078.00		
8732 ARRA - Qualified School Construction Bonds (QSCB)	168,599.41		
TOTAL Revenue from Federal Sources	\$545,063.11		

	Revenue Reported In Current Year		
Other Financing Sources			
9400 Sale of or Compensation for Loss of Fixed Assets	1,034.42		
9990 Insurance Recoveries	90,000.00		
TOTAL Other Financing Sources	\$91,034.42		
TOTAL FROM ALL SOURCES	\$88,380,541.65	\$269,850.52	\$70,224,249.86

Revenue from Local Sources	74,158,445.35
Revenue from State Sources	13,585,998.77
Revenue from Federal Sources	545,063.11
Other Financing Sources	91,034.42
TOTAL FROM ALL SOURCES	\$88,380,541.65

General Fund (10)

1000 Instruction	<u>Total</u>
100 <u>Personnel Services – Salaries</u>	
100 Personnel Services – Salaries	27,025,014.13
Total Personnel Services – Salaries	\$27,025,014.13
200 <u>Personnel Services – Employee Benefits</u>	
210 Group Insurance – Contracted Provider	2,974,287.19
220 Social Security Contributions	2,010,757.84
230 PSERS Retirement Contributions	6,965,515.97
250 Unemployment Compensation	3,743.68
260 Workers’ Compensation	218,602.74
270 Group Insurance – Self-Insurance	924,953.32
290 Other Current Employee Benefits	13,500.00
Total Personnel Services – Employee Benefits	\$13,111,360.74
300 <u>Purchased Professional and Technical Services</u>	
322 Professional Educational Services – Ius	699,544.56
324 Professional Educational Services – Employee Training and Development Services	1,758.62
329 Professional Educational Services – Other	130,648.11
330 Other Professional Services	520,400.12
340 Technical Services	941,234.41
390 Other Purchased Professional and Technical Services	56,089.83
Total Purchased Professional and Technical Services	\$2,349,675.65
400 <u>Purchased Property Services</u>	
430 Repairs and Maintenance Services	284,881.63
440 Rentals	185.00
Total Purchased Property Services	\$285,066.63
500 <u>Other Purchased Services</u>	
550 Printing and Binding	3,546.45
561 Tuition To Other School Districts Within the State	44,494.46
562 Tuition To Pennsylvania Charter Schools	153,659.22
563 Tuition To Nonpublic Schools	4,059,472.39
564 Tuition To Career and Technology Centers	152,951.38
566 Tuition To Institutions of Higher Education and Technical Institutes	1,082,323.00
567 Tuition To Approved Private Schools (APS) and PA Chartered Schools for the Deaf and Blind	434,450.66
568 Tuition To Private Residential Rehabilitative Institutions (PRRI) [In-State] and Detention Centers	9,542.61
580 Travel	7,341.89
Total Other Purchased Services	\$5,947,782.06
600 <u>Supplies</u>	
610 General Supplies	798,819.71
630 Food	13,050.66
640 Books and Periodicals	504,153.09
Total Supplies	\$1,316,023.46
700 <u>Property</u>	
750 Equipment – Original and Additional	525,168.98
760 Equipment – Replacement	417,430.59

General Fund (10)

1000 Instruction		<u>Total</u>
Total Property		\$942,599.57
800 Other Objects		
810 Dues and Fees		4,663.49
Total Other Objects		\$4,663.49
Total 1000 Instruction		\$50,982,185.73

LEA : 125237603 Radnor Township SD

Printed 11/21/2016 8:33:41 AM

Page - 3 of 21

General Fund (10)**1100 Regular Programs – Elementary / Secondary**

	<u>Elementary</u>	<u>Secondary</u>	<u>Federal</u>	<u>Total</u>
100 Personnel Services – Salaries				
100 Personnel Services – Salaries	11,061,130.45	10,803,471.98	182,631.23	22,047,233.66
Total Personnel Services – Salaries	\$11,061,130.45	\$10,803,471.98	\$182,631.23	\$22,047,233.66
200 Personnel Services – Employee Benefits				
210 Group Insurance – Contracted Provider	1,137,285.92	1,270,785.21	11,474.21	2,419,545.34
220 Social Security Contributions	824,969.68	804,651.85	13,857.07	1,643,478.60
230 PSERS Retirement Contributions	2,875,684.20	2,781,044.88	46,593.96	5,703,323.04
250 Unemployment Compensation	2,310.44	1,433.24		3,743.68
260 Workers' Compensation	88,612.20	89,798.92		178,411.12
270 Group Insurance – Self-Insurance	366,716.82	413,654.81	5,349.16	785,720.79
290 Other Current Employee Benefits	7,980.00	4,020.00		12,000.00
Total Personnel Services – Employee Benefits	\$5,303,559.26	\$5,365,388.91	\$77,274.40	\$10,746,222.57
300 Purchased Professional and Technical Services				
324 Professional Educational Services – Employee Training and Development Services	928.62			928.62
329 Professional Educational Services – Other	55,141.61	47,918.50	27,588.00	130,648.11
330 Other Professional Services	5,510.61	9,285.25		14,795.86
Total Purchased Professional and Technical Services	\$61,580.84	\$57,203.75	\$27,588.00	\$146,372.59
400 Purchased Property Services				
430 Repairs and Maintenance Services	143,326.10	135,230.28	5,450.00	284,006.38
440 Rentals		185.00		185.00
Total Purchased Property Services	\$143,326.10	\$135,415.28	\$5,450.00	\$284,191.38
500 Other Purchased Services				
550 Printing and Binding	1,316.00	2,230.45		3,546.45
562 Tuition To Pennsylvania Charter Schools	42,012.24	61,132.57		103,144.81
580 Travel	6,173.80	420.86		6,594.66
Total Other Purchased Services	\$49,502.04	\$63,783.88		\$113,285.92
600 Supplies				
610 General Supplies	374,242.19	342,135.89	2,478.43	718,856.51
630 Food	624.10	10,704.76		11,328.86
640 Books and Periodicals	252,548.63	207,789.47	839.95	461,178.05
Total Supplies	\$627,414.92	\$560,630.12	\$3,318.38	\$1,191,363.42
700 Property				
750 Equipment – Original and Additional	155,383.72	369,785.26		525,168.98
760 Equipment – Replacement	332,383.61	79,731.48		412,115.09
Total Property	\$487,767.33	\$449,516.74		\$937,284.07
800 Other Objects				
810 Dues and Fees	207.71	3,871.78		4,079.49
Total Other Objects	\$207.71	\$3,871.78		\$4,079.49
Total 1100 Regular Programs – Elementary / Secondary	\$17,734,488.65	\$17,439,282.44	\$296,262.01	\$35,470,033.10

General Fund (10)

1110 Regular Programs

	<u>Elementary</u>	<u>Secondary</u>	<u>Federal</u>	<u>Total</u>
100 Personnel Services – Salaries				
100 Personnel Services – Salaries	11,061,130.45	10,803,471.98		21,864,602.43
Total Personnel Services – Salaries	\$11,061,130.45	\$10,803,471.98		\$21,864,602.43
200 Personnel Services – Employee Benefits				
210 Group Insurance – Contracted Provider	1,137,285.92	1,270,785.21		2,408,071.13
220 Social Security Contributions	824,969.68	804,651.85		1,629,621.53
230 PSERS Retirement Contributions	2,875,684.20	2,781,044.88		5,656,729.08
250 Unemployment Compensation	2,310.44	1,433.24		3,743.68
260 Workers' Compensation	88,612.20	89,798.92		178,411.12
270 Group Insurance – Self-Insurance	366,716.82	413,654.81		780,371.63
290 Other Current Employee Benefits	7,980.00	4,020.00		12,000.00
Total Personnel Services – Employee Benefits	\$5,303,559.26	\$5,365,388.91		\$10,668,948.17
300 Purchased Professional and Technical Services				
324 Professional Educational Services – Employee Training and Development Services	928.62			928.62
329 Professional Educational Services – Other	55,141.61	47,918.50		103,060.11
330 Other Professional Services	5,510.61	9,285.25		14,795.86
Total Purchased Professional and Technical Services	\$61,580.84	\$57,203.75		\$118,784.59
400 Purchased Property Services				
430 Repairs and Maintenance Services	143,326.10	135,230.28		278,556.38
440 Rentals		185.00		185.00
Total Purchased Property Services	\$143,326.10	\$135,415.28		\$278,741.38
500 Other Purchased Services				
550 Printing and Binding	1,316.00	2,230.45		3,546.45
562 Tuition To Pennsylvania Charter Schools	42,012.24	61,132.57		103,144.81
580 Travel	6,173.80	420.86		6,594.66
Total Other Purchased Services	\$49,502.04	\$63,783.88		\$113,285.92
600 Supplies				
610 General Supplies	374,242.19	342,135.89		716,378.08
630 Food	624.10	10,704.76		11,328.86
640 Books and Periodicals	252,548.63	207,789.47		460,338.10
Total Supplies	\$627,414.92	\$560,630.12		\$1,188,045.04
700 Property				
750 Equipment – Original and Additional	155,383.72	369,785.26		525,168.98
760 Equipment – Replacement	332,383.61	79,731.48		412,115.09
Total Property	\$487,767.33	\$449,516.74		\$937,284.07
800 Other Objects				
810 Dues and Fees	207.71	3,871.78		4,079.49
Total Other Objects	\$207.71	\$3,871.78		\$4,079.49
Total 1110 Regular Programs	\$17,734,488.65	\$17,439,282.44		\$35,173,771.09

General Fund (10)

	<u>Elementary</u>	<u>Secondary</u>	<u>Federal</u>	<u>Total</u>
1190 Federally-Funded Regular Programs				
100 Personnel Services – Salaries				
100 Personnel Services – Salaries			182,631.23	182,631.23
Total Personnel Services – Salaries			\$182,631.23	\$182,631.23
200 Personnel Services – Employee Benefits				
210 Group Insurance – Contracted Provider			11,474.21	11,474.21
220 Social Security Contributions			13,857.07	13,857.07
230 PSERS Retirement Contributions			46,593.96	46,593.96
270 Group Insurance – Self-Insurance			5,349.16	5,349.16
Total Personnel Services – Employee Benefits			\$77,274.40	\$77,274.40
300 Purchased Professional and Technical Services				
329 Professional Educational Services – Other			27,588.00	27,588.00
Total Purchased Professional and Technical Services			\$27,588.00	\$27,588.00
400 Purchased Property Services				
430 Repairs and Maintenance Services			5,450.00	5,450.00
Total Purchased Property Services			\$5,450.00	\$5,450.00
600 Supplies				
610 General Supplies			2,478.43	2,478.43
640 Books and Periodicals			839.95	839.95
Total Supplies			\$3,318.38	\$3,318.38
Total 1190 Federally-Funded Regular Programs			\$296,262.01	\$296,262.01

General Fund (10)

1200 Special Programs – Elementary / Secondary

	<u>Elementary</u>	<u>Secondary</u>	<u>Federal</u>	<u>Total</u>
100 Personnel Services – Salaries				
100 Personnel Services – Salaries	2,717,289.15	2,256,722.57		4,974,011.72
Total Personnel Services – Salaries	\$2,717,289.15	\$2,256,722.57		\$4,974,011.72
200 Personnel Services – Employee Benefits				
210 Group Insurance – Contracted Provider	296,391.79	258,350.06		554,741.85
220 Social Security Contributions	199,512.70	167,484.95		366,997.65
230 PSERS Retirement Contributions	687,688.77	573,530.32		1,261,219.09
260 Workers' Compensation	21,752.22	18,439.40		40,191.62
270 Group Insurance – Self-Insurance	69,733.25	69,499.28		139,232.53
290 Other Current Employee Benefits		1,500.00		1,500.00
Total Personnel Services – Employee Benefits	\$1,275,078.73	\$1,088,804.01		\$2,363,882.74
300 Purchased Professional and Technical Services				
322 Professional Educational Services – Ius	153,848.14	129,037.80	416,658.62	699,544.56
324 Professional Educational Services – Employee Training and Development Services	150.00	680.00		830.00
330 Other Professional Services	194,034.53	280,117.35	31,302.38	505,454.26
340 Technical Services	729,870.37	211,364.04		941,234.41
390 Other Purchased Professional and Technical Services	26,212.59	29,877.24		56,089.83
Total Purchased Professional and Technical Services	\$1,104,115.63	\$651,076.43	\$447,961.00	\$2,203,153.06
400 Purchased Property Services				
430 Repairs and Maintenance Services		875.25		875.25
Total Purchased Property Services		\$875.25		\$875.25
500 Other Purchased Services				
561 Tuition To Other School Districts Within the State	19,101.25	25,393.21		44,494.46
562 Tuition To Pennsylvania Charter Schools	1,026.62	49,487.79		50,514.41
563 Tuition To Nonpublic Schools	1,621,662.88	2,437,809.51		4,059,472.39
567 Tuition To Approved Private Schools (APS) and PA Chartered Schools for the Deaf and Blind	217,225.33	217,225.33		434,450.66
580 Travel		747.23		747.23
Total Other Purchased Services	\$1,859,016.08	\$2,730,663.07		\$4,589,679.15
600 Supplies				
610 General Supplies	74,012.12	5,951.08		79,963.20
630 Food	595.50	1,126.30		1,721.80
640 Books and Periodicals	7,550.83	5,424.21	30,000.00	42,975.04
Total Supplies	\$82,158.45	\$12,501.59	\$30,000.00	\$124,660.04
700 Property				
760 Equipment – Replacement	5,202.00	113.50		5,315.50
Total Property	\$5,202.00	\$113.50		\$5,315.50
800 Other Objects				
810 Dues and Fees		584.00		584.00
Total Other Objects		\$584.00		\$584.00
Total 1200 Special Programs – Elementary / Secondary	\$7,042,860.04	\$6,741,340.42	\$477,961.00	\$14,262,161.46

General Fund (10)

1210 Life Skills Support

	<u>Elementary</u>	<u>Secondary</u>	<u>Federal</u>	<u>Total</u>
100 Personnel Services – Salaries				
100 Personnel Services – Salaries	141,549.42	126,969.20		268,518.62
Total Personnel Services – Salaries	\$141,549.42	\$126,969.20		\$268,518.62
200 Personnel Services – Employee Benefits				
210 Group Insurance – Contracted Provider	16,179.82	19,853.29		36,033.11
220 Social Security Contributions	10,425.36	9,520.53		19,945.89
230 PSERS Retirement Contributions	36,384.87	32,703.39		69,088.26
260 Workers' Compensation	1,147.28	994.41		2,141.69
270 Group Insurance – Self-Insurance	5,280.77	5,386.31		10,667.08
Total Personnel Services – Employee Benefits	\$69,418.10	\$68,457.93		\$137,876.03
300 Purchased Professional and Technical Services				
322 Professional Educational Services – lus		3,517.14	54,634.93	58,152.07
340 Technical Services		63,041.65		63,041.65
Total Purchased Professional and Technical Services		\$66,558.79	\$54,634.93	\$121,193.72
Total 1210 Life Skills Support	\$210,967.52	\$261,985.92	\$54,634.93	\$527,588.37

General Fund (10)

	<u>Elementary</u>	<u>Secondary</u>	<u>Federal</u>	<u>Total</u>
1220 Sensory Support				
100 Personnel Services – Salaries				
100 Personnel Services – Salaries	177,056.29			177,056.29
Total Personnel Services – Salaries	\$177,056.29			\$177,056.29
200 Personnel Services – Employee Benefits				
210 Group Insurance – Contracted Provider	19,048.04			19,048.04
220 Social Security Contributions	13,290.06			13,290.06
230 PSERS Retirement Contributions	45,502.60			45,502.60
260 Workers' Compensation	1,443.96			1,443.96
270 Group Insurance – Self-Insurance	4,665.34			4,665.34
Total Personnel Services – Employee Benefits	\$83,950.00			\$83,950.00
300 Purchased Professional and Technical Services				
322 Professional Educational Services – lus			199,211.29	199,211.29
330 Other Professional Services	71,575.84	86,461.00		158,036.84
340 Technical Services	28,738.00			28,738.00
Total Purchased Professional and Technical Services	\$100,313.84	\$86,461.00	\$199,211.29	\$385,986.13
600 Supplies				
610 General Supplies	777.65			777.65
Total Supplies	\$777.65			\$777.65
Total 1220 Sensory Support	\$362,097.78	\$86,461.00	\$199,211.29	\$647,770.07

General Fund (10)

1230 Emotional Support

	<u>Elementary</u>	<u>Secondary</u>	<u>Federal</u>	<u>Total</u>
100 Personnel Services – Salaries				
100 Personnel Services – Salaries	59,607.90	291,488.11		351,096.01
Total Personnel Services – Salaries	\$59,607.90	\$291,488.11		\$351,096.01
200 Personnel Services – Employee Benefits				
210 Group Insurance – Contracted Provider	4,004.55	31,416.98		35,421.53
220 Social Security Contributions	4,511.98	21,507.44		26,019.42
230 PSERS Retirement Contributions	15,105.14	74,687.85		89,792.99
260 Workers' Compensation	477.48	2,429.33		2,906.81
270 Group Insurance – Self-Insurance	1,280.19	9,765.38		11,045.57
Total Personnel Services – Employee Benefits	\$25,379.34	\$139,806.98		\$165,186.32
300 Purchased Professional and Technical Services				
322 Professional Educational Services – lus	37,472.25	12,159.06	156,548.40	206,179.71
330 Other Professional Services	10,057.68	83,681.15	7,350.71	101,089.54
340 Technical Services	250,209.03	75,805.13		326,014.16
Total Purchased Professional and Technical Services	\$297,738.96	\$171,645.34	\$163,899.11	\$633,283.41
500 Other Purchased Services				
561 Tuition To Other School Districts Within the State		2,294.76		2,294.76
563 Tuition To Nonpublic Schools	679,471.52	1,702,324.87		2,381,796.39
Total Other Purchased Services	\$679,471.52	\$1,704,619.63		\$2,384,091.15
Total 1230 Emotional Support	\$1,062,197.72	\$2,307,560.06	\$163,899.11	\$3,533,656.89

General Fund (10)

1240 Academic Support

	<u>Elementary</u>	<u>Secondary</u>	<u>Federal</u>	<u>Total</u>
100 Personnel Services – Salaries				
100 Personnel Services – Salaries	2,339,075.54	1,818,914.61		4,157,990.15
Total Personnel Services – Salaries	\$2,339,075.54	\$1,818,914.61		\$4,157,990.15
200 Personnel Services – Employee Benefits				
210 Group Insurance – Contracted Provider	257,159.38	205,074.61		462,233.99
220 Social Security Contributions	171,285.30	135,104.41		306,389.71
230 PSERS Retirement Contributions	590,696.16	461,138.89		1,051,835.05
260 Workers' Compensation	18,683.50	15,015.66		33,699.16
270 Group Insurance – Self-Insurance	58,506.95	54,347.59		112,854.54
290 Other Current Employee Benefits		1,500.00		1,500.00
Total Personnel Services – Employee Benefits	\$1,096,331.29	\$872,181.16		\$1,968,512.45
300 Purchased Professional and Technical Services				
322 Professional Educational Services – Ius	86,992.13	113,361.60	4,000.00	204,353.73
324 Professional Educational Services – Employee Training and Development Services	150.00	680.00		830.00
330 Other Professional Services	112,401.01	109,975.20	23,951.67	246,327.88
340 Technical Services	311,423.34	28,355.95		339,779.29
390 Other Purchased Professional and Technical Services	26,212.59	29,877.24		56,089.83
Total Purchased Professional and Technical Services	\$537,179.07	\$282,249.99	\$27,951.67	\$847,380.73
400 Purchased Property Services				
430 Repairs and Maintenance Services		875.25		875.25
Total Purchased Property Services		\$875.25		\$875.25
500 Other Purchased Services				
561 Tuition To Other School Districts Within the State	19,101.25	23,098.45		42,199.70
562 Tuition To Pennsylvania Charter Schools	1,026.62	49,487.79		50,514.41
563 Tuition To Nonpublic Schools	231,268.38	32,133.54		263,401.92
580 Travel		747.23		747.23
Total Other Purchased Services	\$251,396.25	\$105,467.01		\$356,863.26
600 Supplies				
610 General Supplies	73,234.47	5,951.08		79,185.55
630 Food	595.50	1,126.30		1,721.80
640 Books and Periodicals	7,550.83	5,424.21	30,000.00	42,975.04
Total Supplies	\$81,380.80	\$12,501.59	\$30,000.00	\$123,882.39
700 Property				
760 Equipment – Replacement	5,202.00	113.50		5,315.50
Total Property	\$5,202.00	\$113.50		\$5,315.50
800 Other Objects				
810 Dues and Fees		584.00		584.00
Total Other Objects		\$584.00		\$584.00
Total 1240 Academic Support	\$4,310,564.95	\$3,092,887.11	\$57,951.67	\$7,461,403.73

General Fund (10)

	<u>Elementary</u>	<u>Secondary</u>	<u>Federal</u>	<u>Total</u>
1241 Learning Support – Public				
100 Personnel Services – Salaries				
100 Personnel Services – Salaries	2,056,227.50	1,315,817.64		3,372,045.14
Total Personnel Services – Salaries	\$2,056,227.50	\$1,315,817.64		\$3,372,045.14
200 Personnel Services – Employee Benefits				
210 Group Insurance – Contracted Provider	211,711.10	125,280.13		336,991.23
220 Social Security Contributions	150,381.06	98,032.25		248,413.31
230 PSERS Retirement Contributions	517,847.65	331,764.31		849,611.96
260 Workers' Compensation	16,418.53	10,921.30		27,339.83
270 Group Insurance – Self-Insurance	44,887.81	33,717.71		78,605.52
290 Other Current Employee Benefits		1,500.00		1,500.00
Total Personnel Services – Employee Benefits	\$941,246.15	\$601,215.70		\$1,542,461.85
300 Purchased Professional and Technical Services				
322 Professional Educational Services – Ius	86,992.13	113,361.60	4,000.00	204,353.73
330 Other Professional Services	112,401.01	109,975.20	23,951.67	246,327.88
340 Technical Services	311,423.34	28,355.95		339,779.29
390 Other Purchased Professional and Technical Services	26,212.59	29,877.24		56,089.83
Total Purchased Professional and Technical Services	\$537,029.07	\$281,569.99	\$27,951.67	\$846,550.73
400 Purchased Property Services				
430 Repairs and Maintenance Services		875.25		875.25
Total Purchased Property Services		\$875.25		\$875.25
500 Other Purchased Services				
561 Tuition To Other School Districts Within the State	19,101.25	23,098.45		42,199.70
562 Tuition To Pennsylvania Charter Schools	1,026.62	49,487.79		50,514.41
563 Tuition To Nonpublic Schools	231,268.38	32,133.54		263,401.92
Total Other Purchased Services	\$251,396.25	\$104,719.78		\$356,116.03
600 Supplies				
610 General Supplies	71,858.97	5,877.56		77,736.53
630 Food	595.50	1,126.30		1,721.80
640 Books and Periodicals	6,518.01	5,053.55	30,000.00	41,571.56
Total Supplies	\$78,972.48	\$12,057.41	\$30,000.00	\$121,029.89
700 Property				
760 Equipment – Replacement	5,202.00	113.50		5,315.50
Total Property	\$5,202.00	\$113.50		\$5,315.50
800 Other Objects				
810 Dues and Fees		465.00		465.00
Total Other Objects		\$465.00		\$465.00
Total 1241 Learning Support – Public	\$3,870,073.45	\$2,316,834.27	\$57,951.67	\$6,244,859.39

General Fund (10)

	<u>Elementary</u>	<u>Secondary</u>	<u>Federal</u>	<u>Total</u>
1243 Gifted Support				
100 Personnel Services – Salaries				
100 Personnel Services – Salaries	282,848.04	503,096.97		785,945.01
Total Personnel Services – Salaries	\$282,848.04	\$503,096.97		\$785,945.01
200 Personnel Services – Employee Benefits				
210 Group Insurance – Contracted Provider	45,448.28	79,794.48		125,242.76
220 Social Security Contributions	20,904.24	37,072.16		57,976.40
230 PSERS Retirement Contributions	72,848.51	129,374.58		202,223.09
260 Workers' Compensation	2,264.97	4,094.36		6,359.33
270 Group Insurance – Self-Insurance	13,619.14	20,629.88		34,249.02
Total Personnel Services – Employee Benefits	\$155,085.14	\$270,965.46		\$426,050.60
300 Purchased Professional and Technical Services				
324 Professional Educational Services – Employee Training and Development Services	150.00	680.00		830.00
Total Purchased Professional and Technical Services	\$150.00	\$680.00		\$830.00
500 Other Purchased Services				
580 Travel		747.23		747.23
Total Other Purchased Services		\$747.23		\$747.23
600 Supplies				
610 General Supplies	1,375.50	73.52		1,449.02
640 Books and Periodicals	1,032.82	370.66		1,403.48
Total Supplies	\$2,408.32	\$444.18		\$2,852.50
800 Other Objects				
810 Dues and Fees		119.00		119.00
Total Other Objects		\$119.00		\$119.00
Total 1243 Gifted Support	\$440,491.50	\$776,052.84		\$1,216,544.34

General Fund (10)

	<u>Elementary</u>	<u>Secondary</u>	<u>Federal</u>	<u>Total</u>
1270 Multi-Handicapped Support				
100 Personnel Services – Salaries				
100 Personnel Services – Salaries		19,350.65		19,350.65
Total Personnel Services – Salaries		\$19,350.65		\$19,350.65
200 Personnel Services – Employee Benefits				
210 Group Insurance – Contracted Provider		2,005.18		2,005.18
220 Social Security Contributions		1,352.57		1,352.57
230 PSERS Retirement Contributions		5,000.19		5,000.19
Total Personnel Services – Employee Benefits		\$8,357.94		\$8,357.94
300 Purchased Professional and Technical Services				
340 Technical Services	139,500.00	44,161.31		183,661.31
Total Purchased Professional and Technical Services	\$139,500.00	\$44,161.31		\$183,661.31
500 Other Purchased Services				
563 Tuition To Nonpublic Schools	710,922.98	703,351.10		1,414,274.08
Total Other Purchased Services	\$710,922.98	\$703,351.10		\$1,414,274.08
Total 1270 Multi-Handicapped Support	\$850,422.98	\$775,221.00		\$1,625,643.98

General Fund (10)

1280 Early Intervention Support

300 Purchased Professional and Technical Services

322 Professional Educational Services – lus

Total Purchased Professional and Technical Services

Total 1280 Early Intervention Support

	<u>Elementary</u>	<u>Secondary</u>	<u>Federal</u>	<u>Total</u>
	29,383.76		2,264.00	31,647.76
	\$29,383.76		\$2,264.00	\$31,647.76
	\$29,383.76		\$2,264.00	\$31,647.76

General Fund (10)

	<u>Elementary</u>	<u>Secondary</u>	<u>Federal</u>	<u>Total</u>
1290 Special Programs - Other Support				
500 Other Purchased Services				
567 Tuition To Approved Private Schools (APS) and PA Chartered Schools for the Deaf and Blind	217,225.33	217,225.33		434,450.66
Total Other Purchased Services	\$217,225.33	\$217,225.33		\$434,450.66
Total 1290 Special Programs - Other Support	\$217,225.33	\$217,225.33		\$434,450.66

General Fund (10)

1300 Vocational Education

500 Other Purchased Services

564 Tuition To Career and Technology Centers

Total Other Purchased Services

Total 1300 Vocational Education

<u>Elementary</u>	<u>Secondary</u>	<u>Federal</u>	<u>Total</u>
	152,951.38		152,951.38
	\$152,951.38		\$152,951.38
	\$152,951.38		\$152,951.38

General Fund (10)

	<u>Elementary</u>	<u>Secondary</u>	<u>Federal</u>	<u>Total</u>
1400 Other Instructional Programs – Elementary / Secondary				
100 Personnel Services – Salaries				
100 Personnel Services – Salaries	1,293.75	2,475.00		3,768.75
Total Personnel Services – Salaries	\$1,293.75	\$2,475.00		\$3,768.75
200 Personnel Services – Employee Benefits				
220 Social Security Contributions	98.61	182.98		281.59
230 PSERS Retirement Contributions	334.29	639.55		973.84
Total Personnel Services – Employee Benefits	\$432.90	\$822.53		\$1,255.43
300 Purchased Professional and Technical Services				
330 Other Professional Services		150.00		150.00
Total Purchased Professional and Technical Services		\$150.00		\$150.00
500 Other Purchased Services				
568 Tuition To Private Residential Rehabilitative Institutions (PRRI) [In-State] and Detention Centers		9,542.61		9,542.61
Total Other Purchased Services		\$9,542.61		\$9,542.61
Total 1400 Other Instructional Programs – Elementary / Secondary	\$1,726.65	\$12,990.14		\$14,716.79

General Fund (10)

	<u>Elementary</u>	<u>Secondary</u>	<u>Federal</u>	<u>Total</u>
1430 Homebound Instruction				
100 Personnel Services – Salaries				
100 Personnel Services – Salaries	1,293.75	2,475.00		3,768.75
Total Personnel Services – Salaries	\$1,293.75	\$2,475.00		\$3,768.75
200 Personnel Services – Employee Benefits				
220 Social Security Contributions	98.61	182.98		281.59
230 PSERS Retirement Contributions	334.29	639.55		973.84
Total Personnel Services – Employee Benefits	\$432.90	\$822.53		\$1,255.43
300 Purchased Professional and Technical Services				
330 Other Professional Services		150.00		150.00
Total Purchased Professional and Technical Services		\$150.00		\$150.00
Total 1430 Homebound Instruction	\$1,726.65	\$3,447.53		\$5,174.18

General Fund (10)

	<u>Elementary</u>	<u>Secondary</u>	<u>Federal</u>	<u>Total</u>
1440 Alternative Regular Education Programs				
500 Other Purchased Services				
568 Tuition To Private Residential Rehabilitative Institutions (PRRI) [In-State] and Detention Centers		9,542.61		9,542.61
Total Other Purchased Services		\$9,542.61		\$9,542.61
Total 1440 Alternative Regular Education Programs		\$9,542.61		\$9,542.61

General Fund (10)

1441 Adjudicated / Court-Placed Programs

Elementary

Secondary

Federal

Total

500 Other Purchased Services

568 Tuition To Private Residential Rehabilitative Institutions (PRRI) [In-State] and Detention Centers

9,542.61

9,542.61

Total Other Purchased Services

\$9,542.61

\$9,542.61

Total 1441 Adjudicated / Court-Placed Programs

\$9,542.61

\$9,542.61

General Fund (10)

1700 Higher Education Programs

Elementary

Secondary

Federal

Total

500 Other Purchased Services

566 Tuition To Institutions of Higher Education and Technical Institutes

1,082,323.00

Total Other Purchased Services

\$1,082,323.00

Total 1700 Higher Education Programs

\$1,082,323.00

General Fund (10)

2000 Support Services

Total

100 Personnel Services – Salaries

100 Personnel Services – Salaries 14,180,921.90

Total Personnel Services – Salaries \$14,180,921.90

200 Personnel Services – Employee Benefits

210 Group Insurance – Contracted Provider 2,261,136.98

220 Social Security Contributions 1,025,693.06

230 PSERS Retirement Contributions 3,566,501.39

240 Tuition Reimbursement 104,220.46

250 Unemployment Compensation 4,777.40

260 Workers' Compensation 113,224.41

270 Group Insurance – Self-Insurance 613,959.22

290 Other Current Employee Benefits 273,644.37

Total Personnel Services – Employee Benefits \$7,963,157.29

300 Purchased Professional and Technical Services

324 Professional Educational Services – Employee Training and Development Services 44,555.21

329 Professional Educational Services – Other 217,580.42

330 Other Professional Services 989,164.43

340 Technical Services 222,609.33

Total Purchased Professional and Technical Services \$1,473,909.39

400 Purchased Property Services

410 Cleaning Services 284,683.85

420 Utility Services 1,082,766.28

430 Repairs and Maintenance Services 528,794.70

440 Rentals 206,400.02

460 Extermination Services 17,420.48

Total Purchased Property Services \$2,120,065.33

500 Other Purchased Services

511 Student Transportation Services from Another LEA Within the State 50,612.68

513 Contracted Carriers 37,462.60

515 Public Carriers 5,690.00

516 Student Transportation Services From the IU 34,806.62

520 Insurance – General 176,253.00

522 Automotive Liability Insurance 48,362.00

523 General Property and Liability Insurance 87,586.00

530 Communications 251,902.20

541 Advertising Related to Federal Grant Awards 7,080.89

550 Printing and Binding 10,824.94

580 Travel 88,268.50

595 IU Payments By Withholding 75,442.72

599 Other Miscellaneous Purchased Services 7,349.83

Total Other Purchased Services \$881,641.98

600 Supplies

610 General Supplies 700,371.44

620 Energy 317,215.73

LEA : 125237603 Radnor Township SD

Printed 11/21/2016 8:33:43 AM

General Fund (10)

2000 Support Services

Total

600 Supplies

630 Food	35,005.25
640 Books and Periodicals	84,868.53

Total Supplies	\$1,137,460.95
-----------------------	-----------------------

700 Property

750 Equipment – Original and Additional	67,711.92
760 Equipment – Replacement	253,457.57

Total Property	\$321,169.49
-----------------------	---------------------

800 Other Objects

810 Dues and Fees	101,476.07
-------------------	------------

Total Other Objects	\$101,476.07
----------------------------	---------------------

Total 2000 Support Services	\$28,179,802.40
------------------------------------	------------------------

General Fund (10)

	<u>Elementary</u>	<u>Secondary</u>	<u>Federal</u>	<u>Total</u>
2100 Support Services – Students				
100 Personnel Services – Salaries				
100 Personnel Services – Salaries	721,193.65	1,151,909.00		2,035,015.37
Total Personnel Services – Salaries	\$721,193.65	\$1,151,909.00		\$2,035,015.37
200 Personnel Services – Employee Benefits				
210 Group Insurance – Contracted Provider	74,932.25	114,682.02		205,304.68
220 Social Security Contributions	54,921.97	87,498.77		154,408.63
230 PSERS Retirement Contributions	185,280.99	293,642.48		520,020.69
260 Workers' Compensation	4,910.45	8,210.91		14,422.32
270 Group Insurance – Self-Insurance	21,851.43	35,253.83		62,100.41
290 Other Current Employee Benefits	5,734.23	5,734.04		12,934.95
Total Personnel Services – Employee Benefits	\$347,631.32	\$545,022.05		\$969,191.68
300 Purchased Professional and Technical Services				
324 Professional Educational Services – Employee Training and Development Services	5,557.85	3,709.10		9,906.95
329 Professional Educational Services – Other		300.00		300.00
330 Other Professional Services	53,304.02	36,832.55	2,300.00	92,721.57
Total Purchased Professional and Technical Services	\$58,861.87	\$40,841.65	\$2,300.00	\$102,928.52
400 Purchased Property Services				
430 Repairs and Maintenance Services		2,915.00		2,915.00
Total Purchased Property Services		\$2,915.00		\$2,915.00
500 Other Purchased Services				
530 Communications		24.00		24.00
580 Travel	4,543.45	3,474.32		12,258.09
Total Other Purchased Services	\$4,543.45	\$3,498.32		\$12,282.09
600 Supplies				
610 General Supplies	7,311.45	8,396.02		15,707.47
630 Food	687.63	1,039.11		1,726.74
640 Books and Periodicals	7,391.50	10,285.74		17,677.24
Total Supplies	\$15,390.58	\$19,720.87		\$35,111.45
700 Property				
750 Equipment – Original and Additional	6,597.64	8,344.96		14,942.60
760 Equipment – Replacement	299.99	1,114.18		1,414.17
Total Property	\$6,897.63	\$9,459.14		\$16,356.77
800 Other Objects				
810 Dues and Fees	869.55	1,578.55		2,448.10
Total Other Objects	\$869.55	\$1,578.55		\$2,448.10
Total 2100 Support Services – Students	\$1,155,388.05	\$1,774,944.58	\$2,300.00	\$3,176,248.98

General Fund (10)

	<u>Elementary</u>	<u>Secondary</u>	<u>Federal</u>	<u>Total</u>
2110 Supervision of Student Services				
100 Personnel Services – Salaries				
100 Personnel Services – Salaries	188,024.99	188,024.20		376,049.19
Total Personnel Services – Salaries	\$188,024.99	\$188,024.20		\$376,049.19
200 Personnel Services – Employee Benefits				
210 Group Insurance – Contracted Provider	23,499.61	23,499.18		46,998.79
220 Social Security Contributions	15,071.81	15,071.35		30,143.16
230 PSERS Retirement Contributions	48,109.44	48,109.07		96,218.51
260 Workers' Compensation	447.08	448.72		895.80
270 Group Insurance – Self-Insurance	6,462.42	6,462.26		12,924.68
290 Other Current Employee Benefits	5,734.23	5,734.04		11,468.27
Total Personnel Services – Employee Benefits	\$99,324.59	\$99,324.62		\$198,649.21
300 Purchased Professional and Technical Services				
324 Professional Educational Services – Employee Training and Development Services	5,557.85	3,214.10		8,771.95
330 Other Professional Services	19,259.05	2,894.99		22,154.04
Total Purchased Professional and Technical Services	\$24,816.90	\$6,109.09		\$30,925.99
500 Other Purchased Services				
580 Travel	2,993.94	2,168.97		5,162.91
Total Other Purchased Services	\$2,993.94	\$2,168.97		\$5,162.91
600 Supplies				
610 General Supplies	1,977.93	1,442.25		3,420.18
630 Food	266.28			266.28
640 Books and Periodicals	6,209.64	7,681.46		13,891.10
Total Supplies	\$8,453.85	\$9,123.71		\$17,577.56
700 Property				
750 Equipment – Original and Additional	6,597.64	8,344.96		14,942.60
760 Equipment – Replacement	299.99	914.19		1,214.18
Total Property	\$6,897.63	\$9,259.15		\$16,156.78
800 Other Objects				
810 Dues and Fees	869.55	869.55		1,739.10
Total Other Objects	\$869.55	\$869.55		\$1,739.10
Total 2110 Supervision of Student Services	\$331,381.45	\$314,879.29		\$646,260.74

General Fund (10)

	<u>Elementary</u>	<u>Secondary</u>	<u>Federal</u>	<u>Total</u>
2111 Supervision of Student Services – Head of Component				
100 Personnel Services – Salaries				
100 Personnel Services – Salaries	98,077.61	98,077.34		196,154.95
Total Personnel Services – Salaries	\$98,077.61	\$98,077.34		\$196,154.95
200 Personnel Services – Employee Benefits				
210 Group Insurance – Contracted Provider	8,146.07	8,145.94		16,292.01
220 Social Security Contributions	7,383.99	7,383.93		14,767.92
230 PSERS Retirement Contributions	25,082.36	25,082.36		50,164.72
270 Group Insurance – Self-Insurance	2,318.81	2,318.79		4,637.60
290 Other Current Employee Benefits	2,892.16	2,892.23		5,784.39
Total Personnel Services – Employee Benefits	\$45,823.39	\$45,823.25		\$91,646.64
Total 2111 Supervision of Student Services – Head of Component	\$143,901.00	\$143,900.59		\$287,801.59

General Fund (10)

2119 Supervision of Student Services – All Other Supervision

	<u>Elementary</u>	<u>Secondary</u>	<u>Federal</u>	<u>Total</u>
100 Personnel Services – Salaries				
100 Personnel Services – Salaries	89,947.38	89,946.86		179,894.24
Total Personnel Services – Salaries	\$89,947.38	\$89,946.86		\$179,894.24
200 Personnel Services – Employee Benefits				
210 Group Insurance – Contracted Provider	15,353.54	15,353.24		30,706.78
220 Social Security Contributions	7,687.82	7,687.42		15,375.24
230 PSERS Retirement Contributions	23,027.08	23,026.71		46,053.79
260 Workers' Compensation	447.08	448.72		895.80
270 Group Insurance – Self-Insurance	4,143.61	4,143.47		8,287.08
290 Other Current Employee Benefits	2,842.07	2,841.81		5,683.88
Total Personnel Services – Employee Benefits	\$53,501.20	\$53,501.37		\$107,002.57
300 Purchased Professional and Technical Services				
324 Professional Educational Services – Employee Training and Development Services	5,557.85	3,214.10		8,771.95
330 Other Professional Services	19,259.05	2,894.99		22,154.04
Total Purchased Professional and Technical Services	\$24,816.90	\$6,109.09		\$30,925.99
500 Other Purchased Services				
580 Travel	2,993.94	2,168.97		5,162.91
Total Other Purchased Services	\$2,993.94	\$2,168.97		\$5,162.91
600 Supplies				
610 General Supplies	1,977.93	1,442.25		3,420.18
630 Food	266.28			266.28
640 Books and Periodicals	6,209.64	7,681.46		13,891.10
Total Supplies	\$8,453.85	\$9,123.71		\$17,577.56
700 Property				
750 Equipment – Original and Additional	6,597.64	8,344.96		14,942.60
760 Equipment – Replacement	299.99	914.19		1,214.18
Total Property	\$6,897.63	\$9,259.15		\$16,156.78
800 Other Objects				
810 Dues and Fees	869.55	869.55		1,739.10
Total Other Objects	\$869.55	\$869.55		\$1,739.10
Total 2119 Supervision of Student Services – All Other Supervision	\$187,480.45	\$170,978.70		\$358,459.15

General Fund (10)

	<u>Elementary</u>	<u>Secondary</u>	<u>Federal</u>	<u>Total</u>
2120 Guidance Services				
100 Personnel Services – Salaries				
100 Personnel Services – Salaries	261,634.78	619,181.37		880,816.15
Total Personnel Services – Salaries	\$261,634.78	\$619,181.37		\$880,816.15
200 Personnel Services – Employee Benefits				
210 Group Insurance – Contracted Provider	26,287.06	65,861.55		92,148.61
220 Social Security Contributions	19,759.76	46,744.07		66,503.83
230 PSERS Retirement Contributions	67,439.95	157,670.32		225,110.27
260 Workers' Compensation	2,235.39	4,997.55		7,232.94
270 Group Insurance – Self-Insurance	7,234.39	20,637.40		27,871.79
Total Personnel Services – Employee Benefits	\$122,956.55	\$295,910.89		\$418,867.44
300 Purchased Professional and Technical Services				
329 Professional Educational Services – Other		300.00		300.00
Total Purchased Professional and Technical Services		\$300.00		\$300.00
400 Purchased Property Services				
430 Repairs and Maintenance Services		2,915.00		2,915.00
Total Purchased Property Services		\$2,915.00		\$2,915.00
500 Other Purchased Services				
530 Communications		24.00		24.00
580 Travel		207.16		207.16
Total Other Purchased Services		\$231.16		\$231.16
600 Supplies				
610 General Supplies	754.61	2,646.92		3,401.53
630 Food	421.35	1,039.11		1,460.46
640 Books and Periodicals	1,181.86	2,604.28		3,786.14
Total Supplies	\$2,357.82	\$6,290.31		\$8,648.13
800 Other Objects				
810 Dues and Fees		709.00		709.00
Total Other Objects		\$709.00		\$709.00
Total 2120 Guidance Services	\$386,949.15	\$925,537.73		\$1,312,486.88

General Fund (10)

	<u>Elementary</u>	<u>Secondary</u>	<u>Federal</u>	<u>Total</u>
2140 Psychological Services				
100 Personnel Services – Salaries				
100 Personnel Services – Salaries	271,533.88	344,703.43		616,237.31
Total Personnel Services – Salaries	\$271,533.88	\$344,703.43		\$616,237.31
200 Personnel Services – Employee Benefits				
210 Group Insurance – Contracted Provider	25,145.58	25,321.29		50,466.87
220 Social Security Contributions	20,090.40	25,683.35		45,773.75
230 PSERS Retirement Contributions	69,731.60	87,863.09		157,594.69
260 Workers' Compensation	2,227.98	2,764.64		4,992.62
270 Group Insurance – Self-Insurance	8,154.62	8,154.17		16,308.79
Total Personnel Services – Employee Benefits	\$125,350.18	\$149,786.54		\$275,136.72
300 Purchased Professional and Technical Services				
324 Professional Educational Services – Employee Training and Development Services		495.00		495.00
330 Other Professional Services	34,044.97	33,937.56	2,300.00	70,282.53
Total Purchased Professional and Technical Services	\$34,044.97	\$34,432.56	\$2,300.00	\$70,777.53
500 Other Purchased Services				
580 Travel	1,549.51	1,098.19		2,647.70
Total Other Purchased Services	\$1,549.51	\$1,098.19		\$2,647.70
600 Supplies				
610 General Supplies	4,578.91	4,306.85		8,885.76
Total Supplies	\$4,578.91	\$4,306.85		\$8,885.76
700 Property				
760 Equipment – Replacement		199.99		199.99
Total Property		\$199.99		\$199.99
Total 2140 Psychological Services	\$437,057.45	\$534,527.56	\$2,300.00	\$973,885.01

General Fund (10)

2160 Social Work Services

Elementary Secondary Federal Total

100 Personnel Services – Salaries

100 Personnel Services – Salaries 133,800.00

Total Personnel Services – Salaries \$133,800.00

200 Personnel Services – Employee Benefits

210 Group Insurance – Contracted Provider 12,980.07

220 Social Security Contributions 10,101.63

230 PSERS Retirement Contributions 33,927.98

260 Workers' Compensation 1,073.31

270 Group Insurance – Self-Insurance 4,284.13

Total Personnel Services – Employee Benefits \$62,367.12

500 Other Purchased Services

580 Travel 1,131.15

Total Other Purchased Services \$1,131.15

Total 2160 Social Work Services \$197,298.27

General Fund (10)

2170 Student Accounting Services

Elementary Secondary Federal Total

100 Personnel Services – Salaries

100 Personnel Services – Salaries 28,112.72

Total Personnel Services – Salaries \$28,112.72

200 Personnel Services – Employee Benefits

210 Group Insurance – Contracted Provider 2,710.34

220 Social Security Contributions 1,886.26

230 PSERS Retirement Contributions 7,169.24

260 Workers' Compensation 227.65

270 Group Insurance – Self-Insurance 711.02

290 Other Current Employee Benefits 1,466.68

Total Personnel Services – Employee Benefits \$14,171.19

300 Purchased Professional and Technical Services

324 Professional Educational Services – Employee Training and Development Services 640.00

330 Other Professional Services 285.00

Total Purchased Professional and Technical Services \$925.00

500 Other Purchased Services

580 Travel 3,109.17

Total Other Purchased Services \$3,109.17

Total 2170 Student Accounting Services \$46,318.08

General Fund (10)

2200 Support Services – Instructional Staff

	<u>Elementary</u>	<u>Secondary</u>	<u>Federal</u>	<u>Total</u>
100 Personnel Services – Salaries				
100 Personnel Services – Salaries	1,452,428.01	1,026,696.65		2,479,124.66
Total Personnel Services – Salaries	\$1,452,428.01	\$1,026,696.65		\$2,479,124.66
200 Personnel Services – Employee Benefits				
210 Group Insurance – Contracted Provider	230,148.02	120,348.43		350,496.45
220 Social Security Contributions	101,578.78	70,392.48		171,971.26
230 PSERS Retirement Contributions	368,402.06	259,304.81		627,706.87
240 Tuition Reimbursement	14,720.80	53,244.96		67,965.76
260 Workers' Compensation	13,570.87	9,487.21		23,058.08
270 Group Insurance – Self-Insurance	62,092.91	30,406.02		92,498.93
290 Other Current Employee Benefits	38,273.77	36,631.58		74,905.35
Total Personnel Services – Employee Benefits	\$828,787.21	\$579,815.49		\$1,408,602.70
300 Purchased Professional and Technical Services				
324 Professional Educational Services – Employee Training and Development Services	12,500.87	12,173.80	100.00	24,774.67
329 Professional Educational Services – Other	115,712.81	101,567.61		217,280.42
330 Other Professional Services	30,611.00	31,296.00		61,907.00
Total Purchased Professional and Technical Services	\$158,824.68	\$145,037.41	\$100.00	\$303,962.09
400 Purchased Property Services				
430 Repairs and Maintenance Services	9,535.89	43,734.92		53,270.81
Total Purchased Property Services	\$9,535.89	\$43,734.92		\$53,270.81
500 Other Purchased Services				
530 Communications	848.83	848.03		1,696.86
580 Travel	13,654.90	29,395.06	1,121.57	44,171.53
Total Other Purchased Services	\$14,503.73	\$30,243.09	\$1,121.57	\$45,868.39
600 Supplies				
610 General Supplies	9,973.97	3,332.06		13,306.03
630 Food	8,587.31	8,375.09		16,962.40
640 Books and Periodicals	20,961.28	42,321.87		63,283.15
Total Supplies	\$39,522.56	\$54,029.02		\$93,551.58
700 Property				
750 Equipment – Original and Additional	649.97	2,293.50		2,943.47
Total Property	\$649.97	\$2,293.50		\$2,943.47
800 Other Objects				
810 Dues and Fees	2,191.59	2,849.60		5,041.19
Total Other Objects	\$2,191.59	\$2,849.60		\$5,041.19
Total 2200 Support Services – Instructional Staff	\$2,506,443.64	\$1,884,699.68	\$1,221.57	\$4,392,364.89

General Fund (10)

	<u>Elementary</u>	<u>Secondary</u>	<u>Federal</u>	<u>Total</u>
2220 Technology Support Services				
100 Personnel Services – Salaries				
100 Personnel Services – Salaries	266,173.35	236,753.22		502,926.57
Total Personnel Services – Salaries	\$266,173.35	\$236,753.22		\$502,926.57
200 Personnel Services – Employee Benefits				
210 Group Insurance – Contracted Provider	70,933.54	36,033.64		106,967.18
220 Social Security Contributions	18,926.45	16,850.25		35,776.70
230 PSERS Retirement Contributions	66,278.50	58,769.99		125,048.49
260 Workers' Compensation	3,154.18	2,043.08		5,197.26
270 Group Insurance – Self-Insurance	14,043.16	5,519.41		19,562.57
290 Other Current Employee Benefits	20,132.43	20,132.69		40,265.12
Total Personnel Services – Employee Benefits	\$193,468.26	\$139,349.06		\$332,817.32
300 Purchased Professional and Technical Services				
324 Professional Educational Services – Employee Training and Development Services	159.37	159.38		318.75
330 Other Professional Services	30,611.00	30,611.00		61,222.00
Total Purchased Professional and Technical Services	\$30,770.37	\$30,770.38		\$61,540.75
500 Other Purchased Services				
530 Communications	25.61	41.43		67.04
580 Travel	786.95	850.19		1,637.14
Total Other Purchased Services	\$812.56	\$891.62		\$1,704.18
600 Supplies				
610 General Supplies	20.21	20.22		40.43
630 Food	578.36	578.36		1,156.72
640 Books and Periodicals	281.19	300.77		581.96
Total Supplies	\$879.76	\$899.35		\$1,779.11
800 Other Objects				
810 Dues and Fees	420.09	420.10		840.19
Total Other Objects	\$420.09	\$420.10		\$840.19
Total 2220 Technology Support Services	\$492,524.39	\$409,083.73		\$901,608.12

General Fund (10)

	<u>Elementary</u>	<u>Secondary</u>	<u>Federal</u>	<u>Total</u>
2250 School Library Services				
100 Personnel Services – Salaries				
100 Personnel Services – Salaries	324,967.40	164,925.95		489,893.35
Total Personnel Services – Salaries	\$324,967.40	\$164,925.95		\$489,893.35
200 Personnel Services – Employee Benefits				
210 Group Insurance – Contracted Provider	70,865.49	29,708.40		100,573.89
220 Social Security Contributions	23,793.34	12,290.46		36,083.80
230 PSERS Retirement Contributions	82,958.21	42,187.64		125,145.85
260 Workers' Compensation	2,638.07	1,642.01		4,280.08
270 Group Insurance – Self-Insurance	21,058.88	8,533.82		29,592.70
Total Personnel Services – Employee Benefits	\$201,313.99	\$94,362.33		\$295,676.32
300 Purchased Professional and Technical Services				
324 Professional Educational Services – Employee Training and Development Services		309.20		309.20
330 Other Professional Services		685.00		685.00
Total Purchased Professional and Technical Services		\$994.20		\$994.20
400 Purchased Property Services				
430 Repairs and Maintenance Services	2,414.39	36,613.42		39,027.81
Total Purchased Property Services	\$2,414.39	\$36,613.42		\$39,027.81
500 Other Purchased Services				
580 Travel	275.00			275.00
Total Other Purchased Services	\$275.00			\$275.00
600 Supplies				
610 General Supplies	3,210.25	1,541.39		4,751.64
640 Books and Periodicals	18,453.81	39,784.90		58,238.71
Total Supplies	\$21,664.06	\$41,326.29		\$62,990.35
800 Other Objects				
810 Dues and Fees		60.00		60.00
Total Other Objects		\$60.00		\$60.00
Total 2250 School Library Services	\$550,634.84	\$338,282.19		\$888,917.03

General Fund (10)

	<u>Elementary</u>	<u>Secondary</u>	<u>Federal</u>	<u>Total</u>
2260 Instruction and Curriculum Development Services				
100 Personnel Services – Salaries				
100 Personnel Services – Salaries	486,298.39	489,760.85		976,059.24
Total Personnel Services – Salaries	\$486,298.39	\$489,760.85		\$976,059.24
200 Personnel Services – Employee Benefits				
210 Group Insurance – Contracted Provider	56,119.36	50,200.93		106,320.29
220 Social Security Contributions	30,836.83	31,102.02		61,938.85
230 PSERS Retirement Contributions	122,717.51	123,507.61		246,225.12
260 Workers' Compensation	4,902.21	5,055.08		9,957.29
270 Group Insurance – Self-Insurance	17,471.66	14,922.60		32,394.26
290 Other Current Employee Benefits	17,766.34	16,123.89		33,890.23
Total Personnel Services – Employee Benefits	\$249,813.91	\$240,912.13		\$490,726.04
300 Purchased Professional and Technical Services				
324 Professional Educational Services – Employee Training and Development Services	37.50	37.50		75.00
Total Purchased Professional and Technical Services	\$37.50	\$37.50		\$75.00
500 Other Purchased Services				
530 Communications	823.22	806.60		1,629.82
580 Travel	1,253.80	1,966.30		3,220.10
Total Other Purchased Services	\$2,077.02	\$2,772.90		\$4,849.92
600 Supplies				
610 General Supplies		24.82		24.82
630 Food	701.26	846.88		1,548.14
Total Supplies	\$701.26	\$871.70		\$1,572.96
Total 2260 Instruction and Curriculum Development Services	\$738,928.08	\$734,355.08		\$1,473,283.16

General Fund (10)

2270 Instructional Staff Professional Development Services	<u>Elementary</u>	<u>Secondary</u>	<u>Federal</u>	<u>Total</u>
100 Personnel Services – Salaries				
100 Personnel Services – Salaries	318,770.10	77,394.81		396,164.91
Total Personnel Services – Salaries	\$318,770.10	\$77,394.81		\$396,164.91
200 Personnel Services – Employee Benefits				
210 Group Insurance – Contracted Provider	32,229.63	4,405.46		36,635.09
220 Social Security Contributions	23,855.68	5,813.77		29,669.45
230 PSERS Retirement Contributions	81,922.67	19,887.49		101,810.16
240 Tuition Reimbursement	14,720.80	53,244.96		67,965.76
260 Workers' Compensation	2,564.93	391.19		2,956.12
270 Group Insurance – Self-Insurance	9,519.21	1,430.19		10,949.40
290 Other Current Employee Benefits	375.00	375.00		750.00
Total Personnel Services – Employee Benefits	\$165,187.92	\$85,548.06		\$250,735.98
300 Purchased Professional and Technical Services				
324 Professional Educational Services – Employee Training and Development Services	12,304.00	11,667.72	100.00	24,071.72
329 Professional Educational Services – Other	115,712.81	101,567.61		217,280.42
Total Purchased Professional and Technical Services	\$128,016.81	\$113,235.33	\$100.00	\$241,352.14
400 Purchased Property Services				
430 Repairs and Maintenance Services	7,121.50	7,121.50		14,243.00
Total Purchased Property Services	\$7,121.50	\$7,121.50		\$14,243.00
500 Other Purchased Services				
580 Travel	11,339.15	26,578.57	1,121.57	39,039.29
Total Other Purchased Services	\$11,339.15	\$26,578.57	\$1,121.57	\$39,039.29
600 Supplies				
610 General Supplies	6,743.51	1,745.63		8,489.14
630 Food	7,307.69	6,949.85		14,257.54
640 Books and Periodicals	2,226.28	2,236.20		4,462.48
Total Supplies	\$16,277.48	\$10,931.68		\$27,209.16
700 Property				
750 Equipment – Original and Additional	649.97	2,293.50		2,943.47
Total Property	\$649.97	\$2,293.50		\$2,943.47
800 Other Objects				
810 Dues and Fees	1,771.50	2,369.50		4,141.00
Total Other Objects	\$1,771.50	\$2,369.50		\$4,141.00
Total 2270 Instructional Staff Professional Development Services	\$649,134.43	\$325,472.95	\$1,221.57	\$975,828.95

General Fund (10)

	<u>Elementary</u>	<u>Secondary</u>	<u>Federal</u>	<u>Total</u>
2290 Other Instructional Staff Services				
100 Personnel Services – Salaries				
100 Personnel Services – Salaries	56,218.77	57,861.82		114,080.59
Total Personnel Services – Salaries	\$56,218.77	\$57,861.82		\$114,080.59
200 Personnel Services – Employee Benefits				
220 Social Security Contributions	4,166.48	4,335.98		8,502.46
230 PSERS Retirement Contributions	14,525.17	14,952.08		29,477.25
260 Workers’ Compensation	311.48	355.85		667.33
Total Personnel Services – Employee Benefits	\$19,003.13	\$19,643.91		\$38,647.04
Total 2290 Other Instructional Staff Services	\$75,221.90	\$77,505.73		\$152,727.63

General Fund (10)

	<u>Elementary</u>	<u>Secondary</u>	<u>Federal</u>	<u>Total</u>
2300 Support Services – Administration				
100 Personnel Services – Salaries				
100 Personnel Services – Salaries	1,075,233.56	902,011.71		2,935,282.10
Total Personnel Services – Salaries	\$1,075,233.56	\$902,011.71		\$2,935,282.10
200 Personnel Services – Employee Benefits				
210 Group Insurance – Contracted Provider	113,118.53	180,364.64		363,163.15
220 Social Security Contributions	77,520.50	66,483.08		204,977.36
230 PSERS Retirement Contributions	263,990.48	225,081.37		711,341.11
260 Workers' Compensation	8,324.32	5,878.55		23,187.12
270 Group Insurance – Self-Insurance	33,364.14	39,824.35		102,195.08
290 Other Current Employee Benefits	32,544.59	27,899.94		95,645.64
Total Personnel Services – Employee Benefits	\$528,862.56	\$545,531.93		\$1,500,509.46
300 Purchased Professional and Technical Services				
324 Professional Educational Services – Employee Training and Development Services	181.50	1,187.28		4,140.83
330 Other Professional Services		455.15		326,721.32
340 Technical Services				3,418.15
Total Purchased Professional and Technical Services	\$181.50	\$1,642.43		\$334,280.30
400 Purchased Property Services				
430 Repairs and Maintenance Services		1,188.00		46,255.59
440 Rentals	95,419.37	107,693.59		203,112.96
Total Purchased Property Services	\$95,419.37	\$108,881.59		\$249,368.55
500 Other Purchased Services				
520 Insurance – General				74,966.50
530 Communications	65.78	62.03		4,131.07
541 Advertising Related to Federal Grant Awards				4,097.27
550 Printing and Binding	520.99	6,735.82		9,434.94
580 Travel	2,054.69	4,134.74		18,288.06
599 Other Miscellaneous Purchased Services				7,349.83
Total Other Purchased Services	\$2,641.46	\$10,932.59		\$118,267.67
600 Supplies				
610 General Supplies	7,934.12	6,841.52		33,567.50
630 Food	1,174.74	3,203.24		15,911.07
640 Books and Periodicals	1,341.85	751.69		3,883.14
Total Supplies	\$10,450.71	\$10,796.45		\$53,361.71
700 Property				
750 Equipment – Original and Additional				7,894.49
760 Equipment – Replacement				1,279.96
Total Property				\$9,174.45
800 Other Objects				
810 Dues and Fees	3,058.55	3,509.77		49,669.75
Total Other Objects	\$3,058.55	\$3,509.77		\$49,669.75
Total 2300 Support Services – Administration	\$1,715,847.71	\$1,583,306.47		\$5,249,913.99

General Fund (10)

	<u>Elementary</u>	<u>Secondary</u>	<u>Federal</u>	<u>Total</u>
2310 Board Services				
100 Personnel Services – Salaries				
100 Personnel Services – Salaries				14,124.96
Total Personnel Services – Salaries				\$14,124.96
200 Personnel Services – Employee Benefits				
220 Social Security Contributions				1,052.52
230 PSERS Retirement Contributions				3,649.89
Total Personnel Services – Employee Benefits				\$4,702.41
300 Purchased Professional and Technical Services				
324 Professional Educational Services – Employee Training and Development Services				25.00
330 Other Professional Services				39,242.33
Total Purchased Professional and Technical Services				\$39,267.33
500 Other Purchased Services				
520 Insurance – General				73,347.50
541 Advertising Related to Federal Grant Awards				2,147.27
580 Travel				2,610.14
Total Other Purchased Services				\$78,104.91
600 Supplies				
610 General Supplies				3,484.13
630 Food				9,712.11
640 Books and Periodicals				807.00
Total Supplies				\$14,003.24
800 Other Objects				
810 Dues and Fees				23,950.00
Total Other Objects				\$23,950.00
Total 2310 Board Services				\$174,152.85

General Fund (10)

2320 Board Treasurer Services

Elementary

Secondary

Federal

Total

500 Other Purchased Services

520 Insurance - General

1,619.00

Total Other Purchased Services

\$1,619.00

Total 2320 Board Treasurer Services

\$1,619.00

General Fund (10)

2330 Tax Assessment and Collection Services	<u>Elementary</u>	<u>Secondary</u>	<u>Federal</u>	<u>Total</u>
100 Personnel Services – Salaries				
100 Personnel Services – Salaries				32,344.83
Total Personnel Services – Salaries				\$32,344.83
200 Personnel Services – Employee Benefits				
210 Group Insurance – Contracted Provider				7,647.44
220 Social Security Contributions				2,386.60
230 PSERS Retirement Contributions				7,569.87
260 Workers' Compensation				237.51
270 Group Insurance – Self-Insurance				2,131.33
290 Other Current Employee Benefits				585.93
Total Personnel Services – Employee Benefits				\$20,558.68
500 Other Purchased Services				
530 Communications				3,956.80
Total Other Purchased Services				\$3,956.80
600 Supplies				
610 General Supplies				3,083.26
Total Supplies				\$3,083.26
Total 2330 Tax Assessment and Collection Services				\$59,943.57

General Fund (10)

2340 Staff Relations and Negotiations Services

Elementary

Secondary

Federal

Total

100 Personnel Services – Salaries

100 Personnel Services – Salaries 382,974.08

Total Personnel Services – Salaries \$382,974.08

200 Personnel Services – Employee Benefits

210 Group Insurance – Contracted Provider 37,537.96

220 Social Security Contributions 27,192.85

230 PSERS Retirement Contributions 91,052.63

260 Workers' Compensation 2,745.73

270 Group Insurance – Self-Insurance 12,672.04

290 Other Current Employee Benefits 10,319.62

Total Personnel Services – Employee Benefits \$181,520.83

300 Purchased Professional and Technical Services

324 Professional Educational Services – Employee Training and Development Services 1,399.05

330 Other Professional Services 20,652.30

340 Technical Services 3,029.00

Total Purchased Professional and Technical Services \$25,080.35

400 Purchased Property Services

430 Repairs and Maintenance Services 17,269.85

Total Purchased Property Services \$17,269.85

500 Other Purchased Services

530 Communications 46.46

550 Printing and Binding 203.78

580 Travel 5,399.92

Total Other Purchased Services \$5,650.16

600 Supplies

610 General Supplies 7,869.87

630 Food 1,202.00

640 Books and Periodicals 75.00

Total Supplies \$9,146.87

700 Property

750 Equipment – Original and Additional 3,325.59

760 Equipment – Replacement 399.99

Total Property \$3,725.58

800 Other Objects

810 Dues and Fees 726.50

Total Other Objects \$726.50

Total 2340 Staff Relations and Negotiations Services \$626,094.22

General Fund (10)

	<u>Elementary</u>	<u>Secondary</u>	<u>Federal</u>	<u>Total</u>
2350 Legal and Accounting Services				
300 <u>Purchased Professional and Technical Services</u>				
330 Other Professional Services				264,173.50
Total Purchased Professional and Technical Services				\$264,173.50
500 <u>Other Purchased Services</u>				
599 Other Miscellaneous Purchased Services				7,349.83
Total Other Purchased Services				\$7,349.83
Total 2350 Legal and Accounting Services				\$271,523.33

General Fund (10)

2360 Office of the Superintendent / Executive Director Services

Elementary Secondary Federal Total

100	<u>Personnel Services – Salaries</u>				
	100 Personnel Services – Salaries				367,579.59
Total Personnel Services – Salaries					\$367,579.59
200	<u>Personnel Services – Employee Benefits</u>				
	210 Group Insurance – Contracted Provider				19,303.54
	220 Social Security Contributions				19,089.53
	230 PSERS Retirement Contributions				82,774.61
	260 Workers' Compensation				2,859.15
	270 Group Insurance – Self-Insurance				6,661.33
	290 Other Current Employee Benefits				18,028.38
Total Personnel Services – Employee Benefits					\$148,716.54
300	<u>Purchased Professional and Technical Services</u>				
	324 Professional Educational Services – Employee Training and Development Services				630.00
Total Purchased Professional and Technical Services					\$630.00
500	<u>Other Purchased Services</u>				
	580 Travel				1,404.66
Total Other Purchased Services					\$1,404.66
600	<u>Supplies</u>				
	610 General Supplies				4,303.26
	630 Food				618.98
Total Supplies					\$4,922.24
700	<u>Property</u>				
	750 Equipment – Original and Additional				1,979.00
Total Property					\$1,979.00
800	<u>Other Objects</u>				
	810 Dues and Fees				7,922.00
Total Other Objects					\$7,922.00
Total 2360 Office of the Superintendent / Executive Director Services					\$533,154.03

General Fund (10)

	<u>Elementary</u>	<u>Secondary</u>	<u>Federal</u>	<u>Total</u>
2370 Community Relations Services				
100 Personnel Services – Salaries				
100 Personnel Services – Salaries				138,639.93
Total Personnel Services – Salaries				\$138,639.93
200 Personnel Services – Employee Benefits				
210 Group Insurance – Contracted Provider				6,073.84
220 Social Security Contributions				10,537.06
230 PSERS Retirement Contributions				34,664.08
260 Workers' Compensation				1,031.40
270 Group Insurance – Self-Insurance				2,513.20
290 Other Current Employee Benefits				5,019.86
Total Personnel Services – Employee Benefits				\$59,839.44
300 Purchased Professional and Technical Services				
324 Professional Educational Services – Employee Training and Development Services				718.00
330 Other Professional Services				2,198.04
340 Technical Services				389.15
Total Purchased Professional and Technical Services				\$3,305.19
400 Purchased Property Services				
430 Repairs and Maintenance Services				27,797.74
Total Purchased Property Services				\$27,797.74
500 Other Purchased Services				
541 Advertising Related to Federal Grant Awards				1,950.00
550 Printing and Binding				1,974.35
580 Travel				2,683.91
Total Other Purchased Services				\$6,608.26
600 Supplies				
610 General Supplies				51.34
640 Books and Periodicals				907.60
Total Supplies				\$958.94
700 Property				
750 Equipment – Original and Additional				2,589.90
760 Equipment – Replacement				879.97
Total Property				\$3,469.87
800 Other Objects				
810 Dues and Fees				275.00
Total Other Objects				\$275.00
Total 2370 Community Relations Services				\$240,894.37

General Fund (10)

	<u>Elementary</u>	<u>Secondary</u>	<u>Federal</u>	<u>Total</u>
2380 Office of the Principal Services				
100 Personnel Services – Salaries				
100 Personnel Services – Salaries	1,075,233.56	902,011.71		1,977,245.27
Total Personnel Services – Salaries	\$1,075,233.56	\$902,011.71		\$1,977,245.27
200 Personnel Services – Employee Benefits				
210 Group Insurance – Contracted Provider	113,118.53	180,364.64		293,483.17
220 Social Security Contributions	77,520.50	66,483.08		144,003.58
230 PSERS Retirement Contributions	263,990.48	225,081.37		489,071.85
260 Workers' Compensation	8,324.32	5,878.55		14,202.87
270 Group Insurance – Self-Insurance	33,364.14	39,824.35		73,188.49
290 Other Current Employee Benefits	32,544.59	27,899.94		60,444.53
Total Personnel Services – Employee Benefits	\$528,862.56	\$545,531.93		\$1,074,394.49
300 Purchased Professional and Technical Services				
324 Professional Educational Services – Employee Training and Development Services	181.50	1,187.28		1,368.78
330 Other Professional Services		455.15		455.15
Total Purchased Professional and Technical Services	\$181.50	\$1,642.43		\$1,823.93
400 Purchased Property Services				
430 Repairs and Maintenance Services		1,188.00		1,188.00
440 Rentals	95,419.37	107,693.59		203,112.96
Total Purchased Property Services	\$95,419.37	\$108,881.59		\$204,300.96
500 Other Purchased Services				
530 Communications	65.78	62.03		127.81
550 Printing and Binding	520.99	6,735.82		7,256.81
580 Travel	2,054.69	4,134.74		6,189.43
Total Other Purchased Services	\$2,641.46	\$10,932.59		\$13,574.05
600 Supplies				
610 General Supplies	7,934.12	6,841.52		14,775.64
630 Food	1,174.74	3,203.24		4,377.98
640 Books and Periodicals	1,341.85	751.69		2,093.54
Total Supplies	\$10,450.71	\$10,796.45		\$21,247.16
800 Other Objects				
810 Dues and Fees	3,058.55	3,509.77		6,568.32
Total Other Objects	\$3,058.55	\$3,509.77		\$6,568.32
Total 2380 Office of the Principal Services	\$1,715,847.71	\$1,583,306.47		\$3,299,154.18

General Fund (10)

2390 Other Administration Services

Elementary

Secondary

Federal

Total

100 Personnel Services – Salaries

100 Personnel Services – Salaries

22,373.44

Total Personnel Services – Salaries

\$22,373.44

200 Personnel Services – Employee Benefits

210 Group Insurance – Contracted Provider

(882.80)

220 Social Security Contributions

715.22

230 PSERS Retirement Contributions

2,558.18

260 Workers' Compensation

2,110.46

270 Group Insurance – Self-Insurance

5,028.69

290 Other Current Employee Benefits

1,247.32

Total Personnel Services – Employee Benefits

\$10,777.07

800 Other Objects

810 Dues and Fees

10,227.93

Total Other Objects

\$10,227.93

Total 2390 Other Administration Services

\$43,378.44

General Fund (10)

	<u>Elementary</u>	<u>Secondary</u>	<u>Federal</u>	<u>Total</u>
2400 Support Services – Pupil Health				
100 Personnel Services – Salaries				
100 Personnel Services – Salaries				485,832.49
Total Personnel Services – Salaries				\$485,832.49
200 Personnel Services – Employee Benefits				
210 Group Insurance – Contracted Provider				82,231.27
220 Social Security Contributions				35,693.97
230 PSERS Retirement Contributions				122,253.29
260 Workers' Compensation				3,856.03
270 Group Insurance – Self-Insurance				24,675.15
Total Personnel Services – Employee Benefits				\$268,709.71
300 Purchased Professional and Technical Services				
324 Professional Educational Services – Employee Training and Development Services				534.61
330 Other Professional Services				299,528.89
Total Purchased Professional and Technical Services				\$300,063.50
400 Purchased Property Services				
430 Repairs and Maintenance Services				325.00
Total Purchased Property Services				\$325.00
500 Other Purchased Services				
530 Communications				12.50
550 Printing and Binding				615.00
580 Travel				452.75
Total Other Purchased Services				\$1,080.25
600 Supplies				
610 General Supplies				7,143.34
Total Supplies				\$7,143.34
700 Property				
750 Equipment – Original and Additional				2,792.00
760 Equipment – Replacement				2,567.32
Total Property				\$5,359.32
Total 2400 Support Services – Pupil Health				\$1,068,513.61

General Fund (10)

	<u>Elementary</u>	<u>Secondary</u>	<u>Federal</u>	<u>Total</u>
2410 Supervision of Health Services				
100 Personnel Services – Salaries				
100 Personnel Services – Salaries				2,309.00
Total Personnel Services – Salaries				\$2,309.00
200 Personnel Services – Employee Benefits				
220 Social Security Contributions				173.96
230 PSERS Retirement Contributions				596.61
Total Personnel Services – Employee Benefits				\$770.57
Total 2410 Supervision of Health Services				\$3,079.57

General Fund (10)

	<u>Elementary</u>	<u>Secondary</u>	<u>Federal</u>	<u>Total</u>
2419 Supervision of Health Services – All Other Supervision				
100 Personnel Services – Salaries				
100 Personnel Services – Salaries				2,309.00
Total Personnel Services – Salaries				\$2,309.00
200 Personnel Services – Employee Benefits				
220 Social Security Contributions				173.96
230 PSERS Retirement Contributions				596.61
Total Personnel Services – Employee Benefits				\$770.57
Total 2419 Supervision of Health Services – All Other Supervision				\$3,079.57

General Fund (10)

2420 Medical Services

Elementary

Secondary

Federal

Total

300 Purchased Professional and Technical Services

330 Other Professional Services

5,677.84

Total Purchased Professional and Technical Services

\$5,677.84

Total 2420 Medical Services

\$5,677.84

General Fund (10)

2440 Nursing Services

	<u>Elementary</u>	<u>Secondary</u>	<u>Federal</u>	<u>Total</u>
100 Personnel Services – Salaries				
100 Personnel Services – Salaries				381,283.55
Total Personnel Services – Salaries				\$381,283.55
200 Personnel Services – Employee Benefits				
210 Group Insurance – Contracted Provider				67,418.89
220 Social Security Contributions				27,869.21
230 PSERS Retirement Contributions				95,243.34
260 Workers' Compensation				3,856.03
270 Group Insurance – Self-Insurance				20,674.57
Total Personnel Services – Employee Benefits				\$215,062.04
300 Purchased Professional and Technical Services				
324 Professional Educational Services – Employee Training and Development Services				534.61
330 Other Professional Services				293,851.05
Total Purchased Professional and Technical Services				\$294,385.66
400 Purchased Property Services				
430 Repairs and Maintenance Services				325.00
Total Purchased Property Services				\$325.00
500 Other Purchased Services				
530 Communications				12.50
550 Printing and Binding				615.00
580 Travel				452.75
Total Other Purchased Services				\$1,080.25
600 Supplies				
610 General Supplies				7,143.34
Total Supplies				\$7,143.34
700 Property				
750 Equipment – Original and Additional				2,792.00
760 Equipment – Replacement				2,567.32
Total Property				\$5,359.32
Total 2440 Nursing Services				\$904,639.16

General Fund (10)

2450 Nonpublic Health Services

Elementary

Secondary

Federal

Total

100 Personnel Services – Salaries

100 Personnel Services – Salaries

102,239.94

Total Personnel Services – Salaries

\$102,239.94

200 Personnel Services – Employee Benefits

210 Group Insurance – Contracted Provider

14,812.38

220 Social Security Contributions

7,650.80

230 PSERS Retirement Contributions

26,413.34

270 Group Insurance – Self-Insurance

4,000.58

Total Personnel Services – Employee Benefits

\$52,877.10

Total 2450 Nonpublic Health Services

\$155,117.04

General Fund (10)

	<u>Elementary</u>	<u>Secondary</u>	<u>Federal</u>	<u>Total</u>
2500 Support Services – Business				
100 Personnel Services – Salaries				
100 Personnel Services – Salaries				496,951.25
Total Personnel Services – Salaries				\$496,951.25
200 Personnel Services – Employee Benefits				
210 Group Insurance – Contracted Provider				83,949.91
220 Social Security Contributions				35,553.65
230 PSERS Retirement Contributions				126,977.05
260 Workers' Compensation				4,030.26
270 Group Insurance – Self-Insurance				22,950.21
290 Other Current Employee Benefits				13,320.15
Total Personnel Services – Employee Benefits				\$286,781.23
300 Purchased Professional and Technical Services				
324 Professional Educational Services – Employee Training and Development Services				2,160.15
330 Other Professional Services				7,771.00
Total Purchased Professional and Technical Services				\$9,931.15
400 Purchased Property Services				
440 Rentals				3,287.06
Total Purchased Property Services				\$3,287.06
500 Other Purchased Services				
520 Insurance – General				101,286.50
530 Communications				40,632.34
541 Advertising Related to Federal Grant Awards				2,983.62
580 Travel				1,348.04
Total Other Purchased Services				\$146,250.50
600 Supplies				
610 General Supplies				6,612.66
630 Food				199.80
640 Books and Periodicals				25.00
Total Supplies				\$6,837.46
700 Property				
750 Equipment – Original and Additional				488.00
Total Property				\$488.00
800 Other Objects				
810 Dues and Fees				1,613.70
Total Other Objects				\$1,613.70
Total 2500 Support Services – Business				\$952,140.35

General Fund (10)

2510 Fiscal Services

	<u>Elementary</u>	<u>Secondary</u>	<u>Federal</u>	<u>Total</u>
100 Personnel Services – Salaries				
100 Personnel Services – Salaries				496,951.25
Total Personnel Services – Salaries				\$496,951.25
200 Personnel Services – Employee Benefits				
210 Group Insurance – Contracted Provider				83,949.91
220 Social Security Contributions				35,553.65
230 PSERS Retirement Contributions				126,977.05
260 Workers' Compensation				4,030.26
270 Group Insurance – Self-Insurance				22,950.21
290 Other Current Employee Benefits				13,320.15
Total Personnel Services – Employee Benefits				\$286,781.23
300 Purchased Professional and Technical Services				
324 Professional Educational Services – Employee Training and Development Services				2,160.15
330 Other Professional Services				7,771.00
Total Purchased Professional and Technical Services				\$9,931.15
400 Purchased Property Services				
440 Rentals				3,287.06
Total Purchased Property Services				\$3,287.06
500 Other Purchased Services				
520 Insurance – General				101,286.50
530 Communications				40,632.34
541 Advertising Related to Federal Grant Awards				2,983.62
580 Travel				1,348.04
Total Other Purchased Services				\$146,250.50
600 Supplies				
610 General Supplies				6,612.66
630 Food				199.80
640 Books and Periodicals				25.00
Total Supplies				\$6,837.46
700 Property				
750 Equipment – Original and Additional				488.00
Total Property				\$488.00
800 Other Objects				
810 Dues and Fees				1,613.70
Total Other Objects				\$1,613.70
Total 2510 Fiscal Services				\$952,140.35

General Fund (10)

2511 Supervision of Fiscal Services - Head of Component

Elementary

Secondary

Federal

Total

100 Personnel Services – Salaries

100 Personnel Services – Salaries

235,147.76

Total Personnel Services – Salaries

\$235,147.76

200 Personnel Services – Employee Benefits

210 Group Insurance – Contracted Provider

36,716.96

220 Social Security Contributions

15,843.51

230 PSERS Retirement Contributions

59,757.60

270 Group Insurance – Self-Insurance

9,087.05

290 Other Current Employee Benefits

8,477.43

Total Personnel Services – Employee Benefits

\$129,882.55

Total 2511 Supervision of Fiscal Services - Head of Component

\$365,030.31

General Fund (10)

2514 Payroll Services

Elementary

Secondary

Federal

Total

100 Personnel Services – Salaries

100 Personnel Services – Salaries

56,367.52

Total Personnel Services – Salaries

\$56,367.52

200 Personnel Services – Employee Benefits

210 Group Insurance – Contracted Provider

15,526.97

220 Social Security Contributions

4,192.34

230 PSERS Retirement Contributions

14,482.21

270 Group Insurance – Self-Insurance

4,400.58

Total Personnel Services – Employee Benefits

\$38,602.10

Total 2514 Payroll Services

\$94,969.62

General Fund (10)

2515 Financial Accounting Services

Elementary

Secondary

Federal

Total

100 Personnel Services – Salaries

100 Personnel Services – Salaries

114,183.28

Total Personnel Services – Salaries

\$114,183.28

200 Personnel Services – Employee Benefits

210 Group Insurance – Contracted Provider

14,441.27

220 Social Security Contributions

8,644.89

230 PSERS Retirement Contributions

29,101.80

270 Group Insurance – Self-Insurance

3,571.76

290 Other Current Employee Benefits

4,842.72

Total Personnel Services – Employee Benefits

\$60,602.44

Total 2515 Financial Accounting Services

\$174,785.72

General Fund (10)

2519 Other Fiscal Services

Elementary Secondary Federal Total

100 Personnel Services – Salaries

100 Personnel Services – Salaries 91,252.69

Total Personnel Services – Salaries \$91,252.69

200 Personnel Services – Employee Benefits

210 Group Insurance – Contracted Provider 17,264.71

220 Social Security Contributions 6,872.91

230 PSERS Retirement Contributions 23,635.44

260 Workers' Compensation 4,030.26

270 Group Insurance – Self-Insurance 5,890.82

Total Personnel Services – Employee Benefits \$57,694.14

300 Purchased Professional and Technical Services

324 Professional Educational Services – Employee Training and Development Services 2,160.15

330 Other Professional Services 7,771.00

Total Purchased Professional and Technical Services \$9,931.15

400 Purchased Property Services

440 Rentals 3,287.06

Total Purchased Property Services \$3,287.06

500 Other Purchased Services

520 Insurance – General 101,286.50

530 Communications 40,632.34

541 Advertising Related to Federal Grant Awards 2,983.62

580 Travel 1,348.04

Total Other Purchased Services \$146,250.50

600 Supplies

610 General Supplies 6,612.66

630 Food 199.80

640 Books and Periodicals 25.00

Total Supplies \$6,837.46

700 Property

750 Equipment – Original and Additional 488.00

Total Property \$488.00

800 Other Objects

810 Dues and Fees 1,613.70

Total Other Objects \$1,613.70

Total 2519 Other Fiscal Services \$317,354.70

LEA : 125237603 Radnor Township SD

Printed 11/21/2016 8:33:43 AM

Page - 39 of 60

General Fund (10)**2600 Operation and Maintenance of Plant Services**ElementarySecondaryFederalTotal**100 Personnel Services – Salaries**

100 Personnel Services – Salaries

3,154,869.40

Total Personnel Services – Salaries**\$3,154,869.40****200 Personnel Services – Employee Benefits**

210 Group Insurance – Contracted Provider

644,723.67

220 Social Security Contributions

232,064.60

230 PSERS Retirement Contributions

801,430.09

250 Unemployment Compensation

543.64

260 Workers' Compensation

24,113.33

270 Group Insurance – Self-Insurance

157,214.84

290 Other Current Employee Benefits

29,870.65

Total Personnel Services – Employee Benefits**\$1,889,960.82****300 Purchased Professional and Technical Services**

330 Other Professional Services

110,986.15

Total Purchased Professional and Technical Services**\$110,986.15****400 Purchased Property Services**

410 Cleaning Services

282,144.50

420 Utility Services

1,076,394.52

430 Repairs and Maintenance Services

314,511.33

460 Extermination Services

17,420.48

Total Purchased Property Services**\$1,690,470.83****500 Other Purchased Services**

523 General Property and Liability Insurance

87,586.00

530 Communications

189,052.34

580 Travel

2,827.21

Total Other Purchased Services**\$279,465.55****600 Supplies**

610 General Supplies

245,004.68

245,004.66

490,009.34

620 Energy

92,199.71

630 Food

125.24

Total Supplies**\$245,004.68****\$245,004.66****\$582,334.29****700 Property**

760 Equipment – Replacement

107,037.70

Total Property**\$107,037.70****800 Other Objects**

810 Dues and Fees

39,574.83

Total Other Objects**\$39,574.83****Total 2600 Operation and Maintenance of Plant Services****\$245,004.68****\$245,004.66****\$7,854,699.57**

General Fund (10)

	<u>Elementary</u>	<u>Secondary</u>	<u>Federal</u>	<u>Total</u>
2610 Supervision of Operation and Maintenance of Plant Services				
100 Personnel Services – Salaries				
100 Personnel Services – Salaries				339,323.18
Total Personnel Services – Salaries				\$339,323.18
200 Personnel Services – Employee Benefits				
210 Group Insurance – Contracted Provider				61,995.90
220 Social Security Contributions				20,568.57
230 PSERS Retirement Contributions				80,067.18
270 Group Insurance – Self-Insurance				11,450.57
290 Other Current Employee Benefits				16,897.34
Total Personnel Services – Employee Benefits				\$190,979.56
300 Purchased Professional and Technical Services				
330 Other Professional Services				22,776.49
Total Purchased Professional and Technical Services				\$22,776.49
400 Purchased Property Services				
410 Cleaning Services				282,144.50
420 Utility Services				1,076,394.52
430 Repairs and Maintenance Services				308,076.00
460 Extermination Services				17,420.48
Total Purchased Property Services				\$1,684,035.50
500 Other Purchased Services				
523 General Property and Liability Insurance				87,586.00
530 Communications				189,052.34
580 Travel				1,185.01
Total Other Purchased Services				\$277,823.35
600 Supplies				
610 General Supplies	241,535.51	241,535.50		483,071.01
620 Energy				92,199.71
630 Food				125.24
Total Supplies	\$241,535.51	\$241,535.50		\$575,395.96
700 Property				
760 Equipment – Replacement				100,160.63
Total Property				\$100,160.63
800 Other Objects				
810 Dues and Fees				39,574.83
Total Other Objects				\$39,574.83
Total 2610 Supervision of Operation and Maintenance of Plant Services	\$241,535.51	\$241,535.50		\$3,230,069.50

General Fund (10)

2611 Supervision of Operation and Maintenance of Plant Services – Head of Component

Elementary

Secondary

Federal

Total

100 Personnel Services – Salaries

100 Personnel Services – Salaries

253,682.48

Total Personnel Services – Salaries

\$253,682.48

200 Personnel Services – Employee Benefits

210 Group Insurance – Contracted Provider

46,895.23

220 Social Security Contributions

14,187.14

230 PSERS Retirement Contributions

58,325.38

270 Group Insurance – Self-Insurance

7,015.64

290 Other Current Employee Benefits

10,016.03

Total Personnel Services – Employee Benefits

\$136,439.42

Total 2611 Supervision of Operation and Maintenance of Plant Services – Head of Component

\$390,121.90

General Fund (10)

2619 Supervision of Operation and Maintenance of Plant Services – All Other Supervision

	<u>Elementary</u>	<u>Secondary</u>	<u>Federal</u>	<u>Total</u>
100 Personnel Services – Salaries				
100 Personnel Services – Salaries				85,640.70
Total Personnel Services – Salaries				\$85,640.70
200 Personnel Services – Employee Benefits				
210 Group Insurance – Contracted Provider				15,100.67
220 Social Security Contributions				6,381.43
230 PSERS Retirement Contributions				21,741.80
270 Group Insurance – Self-Insurance				4,434.93
290 Other Current Employee Benefits				6,881.31
Total Personnel Services – Employee Benefits				\$54,540.14
300 Purchased Professional and Technical Services				
330 Other Professional Services				22,776.49
Total Purchased Professional and Technical Services				\$22,776.49
400 Purchased Property Services				
410 Cleaning Services				282,144.50
420 Utility Services				1,076,394.52
430 Repairs and Maintenance Services				308,076.00
460 Extermination Services				17,420.48
Total Purchased Property Services				\$1,684,035.50
500 Other Purchased Services				
523 General Property and Liability Insurance				87,586.00
530 Communications				189,052.34
580 Travel				1,185.01
Total Other Purchased Services				\$277,823.35
600 Supplies				
610 General Supplies	241,535.51	241,535.50		483,071.01
620 Energy				92,199.71
630 Food				125.24
Total Supplies	\$241,535.51	\$241,535.50		\$575,395.96
700 Property				
760 Equipment – Replacement				100,160.63
Total Property				\$100,160.63
800 Other Objects				
810 Dues and Fees				39,574.83
Total Other Objects				\$39,574.83
Total 2619 Supervision of Operation and Maintenance of Plant Services – All Other Supervision	\$241,535.51	\$241,535.50		\$2,839,947.60

General Fund (10)

2620 Operation of Buildings Services

Elementary

Secondary

Federal

Total

100 Personnel Services – Salaries

100 Personnel Services – Salaries

2,569,416.05

Total Personnel Services – Salaries

\$2,569,416.05

200 Personnel Services – Employee Benefits

210 Group Insurance – Contracted Provider

549,577.38

220 Social Security Contributions

192,988.54

230 PSERS Retirement Contributions

662,629.44

260 Workers' Compensation

21,896.85

270 Group Insurance – Self-Insurance

137,478.60

290 Other Current Employee Benefits

10,693.19

Total Personnel Services – Employee Benefits

\$1,575,264.00

Total 2620 Operation of Buildings Services

\$4,144,680.05

General Fund (10)

	<u>Elementary</u>	<u>Secondary</u>	<u>Federal</u>	<u>Total</u>
2660 Safety and Security Services				
100 Personnel Services – Salaries				
100 Personnel Services – Salaries				246,130.17
Total Personnel Services – Salaries				\$246,130.17
200 Personnel Services – Employee Benefits				
210 Group Insurance – Contracted Provider				33,150.39
220 Social Security Contributions				18,507.49
230 PSERS Retirement Contributions				58,733.47
250 Unemployment Compensation				543.64
260 Workers' Compensation				2,216.48
270 Group Insurance – Self-Insurance				8,285.67
290 Other Current Employee Benefits				2,280.12
Total Personnel Services – Employee Benefits				\$123,717.26
300 Purchased Professional and Technical Services				
330 Other Professional Services				88,209.66
Total Purchased Professional and Technical Services				\$88,209.66
400 Purchased Property Services				
430 Repairs and Maintenance Services				6,435.33
Total Purchased Property Services				\$6,435.33
500 Other Purchased Services				
580 Travel				1,642.20
Total Other Purchased Services				\$1,642.20
600 Supplies				
610 General Supplies	3,469.17	3,469.16		6,938.33
Total Supplies	\$3,469.17	\$3,469.16		\$6,938.33
700 Property				
760 Equipment – Replacement				6,877.07
Total Property				\$6,877.07
Total 2660 Safety and Security Services	\$3,469.17	\$3,469.16		\$479,950.02

General Fund (10)

2700 Student Transportation Services

Elementary Secondary Federal Total

100	<u>Personnel Services – Salaries</u>				
	100 Personnel Services – Salaries				2,010,197.13
Total Personnel Services – Salaries					\$2,010,197.13
200	<u>Personnel Services – Employee Benefits</u>				
	210 Group Insurance – Contracted Provider				469,162.19
	220 Social Security Contributions				148,156.11
	230 PSERS Retirement Contributions				508,235.35
	250 Unemployment Compensation				4,233.76
	260 Workers' Compensation				15,844.07
	270 Group Insurance – Self-Insurance				134,198.41
	290 Other Current Employee Benefits				36,600.40
Total Personnel Services – Employee Benefits					\$1,316,430.29
300	<u>Purchased Professional and Technical Services</u>				
	324 Professional Educational Services – Employee Training and Development Services				405.00
	330 Other Professional Services				2,962.00
	340 Technical Services				49,067.92
Total Purchased Professional and Technical Services					\$52,434.92
400	<u>Purchased Property Services</u>				
	410 Cleaning Services				2,539.35
	420 Utility Services				6,371.76
	430 Repairs and Maintenance Services				15,578.70
Total Purchased Property Services					\$24,489.81
500	<u>Other Purchased Services</u>				
	511 Student Transportation Services from Another LEA Within the State				50,612.68
	513 Contracted Carriers				37,462.60
	515 Public Carriers				5,690.00
	516 Student Transportation Services From the IU				34,806.62
	522 Automotive Liability Insurance				48,362.00
	530 Communications				16,353.09
	550 Printing and Binding				775.00
	580 Travel				2,153.72
Total Other Purchased Services					\$196,215.71
600	<u>Supplies</u>				
	610 General Supplies				89,364.96
	620 Energy				225,016.02
	630 Food				40.00
Total Supplies					\$314,420.98
700	<u>Property</u>				
	760 Equipment – Replacement				4,795.00
Total Property					\$4,795.00
800	<u>Other Objects</u>				

General Fund (10)

	<u>Elementary</u>	<u>Secondary</u>	<u>Federal</u>	<u>Total</u>
2700 Student Transportation Services				
800 Other Objects				
810 Dues and Fees				1,610.50
Total Other Objects				\$1,610.50
Total 2700 Student Transportation Services				\$3,920,594.34

General Fund (10)

	<u>Elementary</u>	<u>Secondary</u>	<u>Federal</u>	<u>Total</u>
2710 Supervision of Student Transportation Services				
100 Personnel Services – Salaries				
100 Personnel Services – Salaries				321,762.96
Total Personnel Services – Salaries				\$321,762.96
200 Personnel Services – Employee Benefits				
210 Group Insurance – Contracted Provider				40,474.32
220 Social Security Contributions				19,132.19
230 PSERS Retirement Contributions				62,079.92
270 Group Insurance – Self-Insurance				12,290.22
290 Other Current Employee Benefits				12,621.62
Total Personnel Services – Employee Benefits				\$146,598.27
300 Purchased Professional and Technical Services				
324 Professional Educational Services – Employee Training and Development Services				405.00
330 Other Professional Services				2,962.00
340 Technical Services				49,067.92
Total Purchased Professional and Technical Services				\$52,434.92
400 Purchased Property Services				
410 Cleaning Services				2,539.35
430 Repairs and Maintenance Services				15,578.70
Total Purchased Property Services				\$18,118.05
500 Other Purchased Services				
513 Contracted Carriers				37,462.60
516 Student Transportation Services From the IU				34,806.62
522 Automotive Liability Insurance				48,362.00
530 Communications				16,353.09
550 Printing and Binding				775.00
580 Travel				2,153.72
Total Other Purchased Services				\$139,913.03
600 Supplies				
610 General Supplies				88,885.70
620 Energy				225,016.02
630 Food				40.00
Total Supplies				\$313,941.72
700 Property				
760 Equipment – Replacement				4,795.00
Total Property				\$4,795.00
800 Other Objects				
810 Dues and Fees				1,610.50
Total Other Objects				\$1,610.50
Total 2710 Supervision of Student Transportation Services				\$999,174.45

General Fund (10)

2711 Supervision of Student Transportation Services – Head of Component

Elementary

Secondary

Federal

Total

100 Personnel Services – Salaries

100 Personnel Services – Salaries

231,238.11

Total Personnel Services – Salaries

\$231,238.11

200 Personnel Services – Employee Benefits

210 Group Insurance – Contracted Provider

28,251.40

220 Social Security Contributions

11,718.83

230 PSERS Retirement Contributions

38,834.97

270 Group Insurance – Self-Insurance

9,581.28

290 Other Current Employee Benefits

9,106.14

Total Personnel Services – Employee Benefits

\$97,492.62

Total 2711 Supervision of Student Transportation Services – Head of Component

\$328,730.73

General Fund (10)

2719 Supervision of Student Transportation Services – All Other Supervision

Elementary

Secondary

Federal

Total

100 Personnel Services – Salaries

100 Personnel Services – Salaries 90,524.85

Total Personnel Services – Salaries \$90,524.85

200 Personnel Services – Employee Benefits

210 Group Insurance – Contracted Provider 12,222.92

220 Social Security Contributions 7,413.36

230 PSERS Retirement Contributions 23,244.95

270 Group Insurance – Self-Insurance 2,708.94

290 Other Current Employee Benefits 3,515.48

Total Personnel Services – Employee Benefits \$49,105.65

300 Purchased Professional and Technical Services

324 Professional Educational Services – Employee Training and Development Services 405.00

330 Other Professional Services 2,962.00

340 Technical Services 49,067.92

Total Purchased Professional and Technical Services \$52,434.92

400 Purchased Property Services

410 Cleaning Services 2,539.35

430 Repairs and Maintenance Services 15,578.70

Total Purchased Property Services \$18,118.05

500 Other Purchased Services

513 Contracted Carriers 37,462.60

516 Student Transportation Services From the IU 34,806.62

522 Automotive Liability Insurance 48,362.00

530 Communications 16,353.09

550 Printing and Binding 775.00

580 Travel 2,153.72

Total Other Purchased Services \$139,913.03

600 Supplies

610 General Supplies 88,885.70

620 Energy 225,016.02

630 Food 40.00

Total Supplies \$313,941.72

700 Property

760 Equipment – Replacement 4,795.00

Total Property \$4,795.00

800 Other Objects

810 Dues and Fees 1,610.50

Total Other Objects \$1,610.50

Total 2719 Supervision of Student Transportation Services – All Other Supervision \$670,443.72

General Fund (10)

2720 Vehicle Operation Services

Elementary

Secondary

Federal

Total

100 Personnel Services – Salaries

100 Personnel Services – Salaries

1,399,813.14

Total Personnel Services – Salaries

\$1,399,813.14

200 Personnel Services – Employee Benefits

210 Group Insurance – Contracted Provider

387,219.53

220 Social Security Contributions

111,531.27

230 PSERS Retirement Contributions

386,667.57

250 Unemployment Compensation

4,233.76

260 Workers' Compensation

15,844.07

270 Group Insurance – Self-Insurance

109,256.64

290 Other Current Employee Benefits

6,913.69

Total Personnel Services – Employee Benefits

\$1,021,666.53

400 Purchased Property Services

420 Utility Services

6,371.76

Total Purchased Property Services

\$6,371.76

500 Other Purchased Services

511 Student Transportation Services from Another LEA Within the State

50,612.68

Total Other Purchased Services

\$50,612.68

Total 2720 Vehicle Operation Services

\$2,478,464.11

General Fund (10)

2730 Monitoring Services

Elementary

Secondary

Federal

Total

100 Personnel Services – Salaries

100 Personnel Services – Salaries

112,961.37

Total Personnel Services – Salaries

\$112,961.37

200 Personnel Services – Employee Benefits

210 Group Insurance – Contracted Provider

27,494.06

220 Social Security Contributions

8,243.87

230 PSERS Retirement Contributions

28,869.90

270 Group Insurance – Self-Insurance

10,207.51

Total Personnel Services – Employee Benefits

\$74,815.34

Total 2730 Monitoring Services

\$187,776.71

General Fund (10)

2740 Vehicle Servicing and Maintenance Services

Elementary

Secondary

Federal

Total

100 Personnel Services – Salaries

100 Personnel Services – Salaries

175,659.66

Total Personnel Services – Salaries

\$175,659.66

200 Personnel Services – Employee Benefits

210 Group Insurance – Contracted Provider

13,974.28

220 Social Security Contributions

9,248.78

230 PSERS Retirement Contributions

30,617.96

270 Group Insurance – Self-Insurance

2,444.04

290 Other Current Employee Benefits

17,065.09

Total Personnel Services – Employee Benefits

\$73,350.15

Total 2740 Vehicle Servicing and Maintenance Services

\$249,009.81

General Fund (10)

	<u>Elementary</u>	<u>Secondary</u>	<u>Federal</u>	<u>Total</u>
2750 Nonpublic Transportation				
500 <u>Other Purchased Services</u>				
515 Public Carriers				5,690.00
Total Other Purchased Services				\$5,690.00
600 <u>Supplies</u>				
610 General Supplies				479.26
Total Supplies				\$479.26
Total 2750 Nonpublic Transportation				\$6,169.26

General Fund (10)

	<u>Elementary</u>	<u>Secondary</u>	<u>Federal</u>	<u>Total</u>
2800 Support Services – Central				
100 Personnel Services – Salaries				
100 Personnel Services – Salaries				583,649.50
Total Personnel Services – Salaries				\$583,649.50
200 Personnel Services – Employee Benefits				
210 Group Insurance – Contracted Provider				62,105.66
220 Social Security Contributions				42,867.48
230 PSERS Retirement Contributions				148,536.94
240 Tuition Reimbursement				36,254.70
260 Workers' Compensation				4,713.20
270 Group Insurance – Self-Insurance				18,126.19
290 Other Current Employee Benefits				10,367.23
Total Personnel Services – Employee Benefits				\$322,971.40
300 Purchased Professional and Technical Services				
324 Professional Educational Services – Employee Training and Development Services				2,633.00
330 Other Professional Services				86,566.50
340 Technical Services				170,123.26
Total Purchased Professional and Technical Services				\$259,322.76
400 Purchased Property Services				
430 Repairs and Maintenance Services				95,938.27
Total Purchased Property Services				\$95,938.27
500 Other Purchased Services				
580 Travel				6,769.10
Total Other Purchased Services				\$6,769.10
600 Supplies				
610 General Supplies				44,660.14
630 Food				40.00
Total Supplies				\$44,700.14
700 Property				
750 Equipment – Original and Additional				38,651.36
760 Equipment – Replacement				136,363.42
Total Property				\$175,014.78
800 Other Objects				
810 Dues and Fees				1,518.00
Total Other Objects				\$1,518.00
Total 2800 Support Services – Central				\$1,489,883.95

General Fund (10)

2830 Staff Services

Elementary

Secondary

Federal

Total

200 Personnel Services – Employee Benefits

240 Tuition Reimbursement

36,254.70

Total Personnel Services – Employee Benefits

\$36,254.70

Total 2830 Staff Services

\$36,254.70

General Fund (10)

2834 Staff Development Services – Non-Instructional, Certified Staff Only

Elementary

Secondary

Federal

Total

200 Personnel Services – Employee Benefits

240 Tuition Reimbursement

31,781.20

Total Personnel Services – Employee Benefits

\$31,781.20

Total 2834 Staff Development Services – Non-Instructional, Certified Staff Only

\$31,781.20

General Fund (10)

2836 Staff Development Services – Non-Instructional, Non-Certified Staff Only

Elementary

Secondary

Federal

Total

200 Personnel Services – Employee Benefits

240 Tuition Reimbursement

4,473.50

Total Personnel Services – Employee Benefits

\$4,473.50

Total 2836 Staff Development Services – Non-Instructional, Non-Certified Staff Only

\$4,473.50

General Fund (10)

2840 Data Processing Services

Elementary Secondary Federal Total

100 Personnel Services – Salaries

100 Personnel Services – Salaries 583,649.50

Total Personnel Services – Salaries \$583,649.50

200 Personnel Services – Employee Benefits

210 Group Insurance – Contracted Provider 62,105.66

220 Social Security Contributions 42,867.48

230 PSERS Retirement Contributions 148,536.94

260 Workers' Compensation 4,713.20

270 Group Insurance – Self-Insurance 18,126.19

290 Other Current Employee Benefits 10,367.23

Total Personnel Services – Employee Benefits \$286,716.70

300 Purchased Professional and Technical Services

324 Professional Educational Services – Employee Training and Development Services 2,633.00

330 Other Professional Services 86,566.50

340 Technical Services 170,123.26

Total Purchased Professional and Technical Services \$259,322.76

400 Purchased Property Services

430 Repairs and Maintenance Services 95,938.27

Total Purchased Property Services \$95,938.27

500 Other Purchased Services

580 Travel 6,769.10

Total Other Purchased Services \$6,769.10

600 Supplies

610 General Supplies 44,660.14

630 Food 40.00

Total Supplies \$44,700.14

700 Property

750 Equipment – Original and Additional 38,651.36

760 Equipment – Replacement 136,363.42

Total Property \$175,014.78

800 Other Objects

810 Dues and Fees 1,518.00

Total Other Objects \$1,518.00

Total 2840 Data Processing Services \$1,453,629.25

LEA : 125237603 Radnor Township SD

Printed 11/21/2016 8:33:43 AM

General Fund (10)

2900 Other Support Services

Elementary

Secondary

Federal

Total

500 Other Purchased Services

595 IU Payments By Withholding

75,442.72

Total Other Purchased Services

\$75,442.72

Total 2900 Other Support Services

\$75,442.72

General Fund (10)

2910 Support Services Not Listed Elsewhere In the 2000 Series

Elementary

Secondary

Federal

Total

500 Other Purchased Services

595 IU Payments By Withholding

75,442.72

Total Other Purchased Services

\$75,442.72

Total 2910 Support Services Not Listed Elsewhere In the 2000 Series

\$75,442.72

General Fund (10)

3000 Operation of Non-Instructional Services	<u>Total</u>
100 Personnel Services – Salaries	
100 Personnel Services – Salaries	673,314.80
Total Personnel Services – Salaries	\$673,314.80
200 Personnel Services – Employee Benefits	
210 Group Insurance – Contracted Provider	5,827.40
220 Social Security Contributions	50,971.77
230 PSERS Retirement Contributions	164,398.97
260 Workers’ Compensation	3,926.66
270 Group Insurance – Self-Insurance	2,069.48
290 Other Current Employee Benefits	5,028.13
Total Personnel Services – Employee Benefits	\$232,222.41
300 Purchased Professional and Technical Services	
330 Other Professional Services	69,244.50
390 Other Purchased Professional and Technical Services	49,690.19
Total Purchased Professional and Technical Services	\$118,934.69
400 Purchased Property Services	
430 Repairs and Maintenance Services	13,061.76
Total Purchased Property Services	\$13,061.76
500 Other Purchased Services	
520 Insurance – General	10,982.00
580 Travel	8,395.73
Total Other Purchased Services	\$19,377.73
600 Supplies	
610 General Supplies	58,741.04
630 Food	240.40
Total Supplies	\$58,981.44
700 Property	
750 Equipment – Original and Additional	4,929.99
Total Property	\$4,929.99
800 Other Objects	
810 Dues and Fees	96,358.32
890 Miscellaneous Expenditures	(3,195.00)
Total Other Objects	\$93,163.32
Total 3000 Operation of Non-Instructional Services	\$1,213,986.14

General Fund (10)

3200 Student Activities

Elementary

Secondary

Federal

Total

100 Personnel Services – Salaries

100 Personnel Services – Salaries

673,314.80

Total Personnel Services – Salaries

\$673,314.80

200 Personnel Services – Employee Benefits

210 Group Insurance – Contracted Provider

5,827.40

220 Social Security Contributions

50,971.77

230 PSERS Retirement Contributions

164,398.97

260 Workers' Compensation

3,926.66

270 Group Insurance – Self-Insurance

2,069.48

290 Other Current Employee Benefits

5,028.13

Total Personnel Services – Employee Benefits

\$232,222.41

300 Purchased Professional and Technical Services

330 Other Professional Services

69,244.50

390 Other Purchased Professional and Technical Services

49,690.19

Total Purchased Professional and Technical Services

\$118,934.69

400 Purchased Property Services

430 Repairs and Maintenance Services

13,061.76

Total Purchased Property Services

\$13,061.76

500 Other Purchased Services

520 Insurance – General

10,982.00

580 Travel

8,395.73

Total Other Purchased Services

\$19,377.73

600 Supplies

610 General Supplies

57,839.04

630 Food

240.40

Total Supplies

\$58,079.44

700 Property

750 Equipment – Original and Additional

4,929.99

Total Property

\$4,929.99

800 Other Objects

810 Dues and Fees

96,358.32

890 Miscellaneous Expenditures

(3,195.00)

Total Other Objects

\$93,163.32

Total 3200 Student Activities

\$1,213,084.14

LEA : 125237603 Radnor Township SD

Printed 11/21/2016 8:33:47 AM

General Fund (10)

3300 Community Services

600 Supplies

610 General Supplies

	<u>Elementary</u>	<u>Secondary</u>	<u>Federal</u>	<u>Total</u>
Total Supplies			\$902.00	\$902.00
Total 3300 Community Services			\$902.00	\$902.00

General Fund (10)

5000 Other Expenditures and Financing Uses

Total

800 Other Objects

830 Interest	3,118,040.91
880 Refunds of Prior Years' Receipts	0.30

Total Other Objects	\$3,118,041.21
----------------------------	-----------------------

900 Other Uses of Funds

910 Redemption of Principal	1,830,000.00
920 Authority Obligations	301,034.00
930 Fund Transfers	274,391.00
932 Capital Reserve Fund Transfers Applicable To Fund 32	5,898,223.00

Total Other Uses of Funds	\$8,303,648.00
----------------------------------	-----------------------

Total 5000 Other Expenditures and Financing Uses	\$11,421,689.21
---	------------------------

General Fund (10)

5100 Debt Service / Other Expenditures and Financing Uses	<u>Elementary</u>	<u>Secondary</u>	<u>Federal</u>	<u>Total</u>
800 Other Objects				
830 Interest				3,118,040.91
880 Refunds of Prior Years' Receipts				0.30
Total Other Objects				\$3,118,041.21
900 Other Uses of Funds				
910 Redemption of Principal				1,830,000.00
920 Authority Obligations				301,034.00
Total Other Uses of Funds				\$2,131,034.00
Total 5100 Debt Service / Other Expenditures and Financing Uses				\$5,249,075.21

General Fund (10)

	<u>Elementary</u>	<u>Secondary</u>	<u>Federal</u>	<u>Total</u>
5110 Debt Service				
800 Other Objects				
830 Interest				3,118,040.91
Total Other Objects				\$3,118,040.91
900 Other Uses of Funds				
910 Redemption of Principal				1,830,000.00
920 Authority Obligations				301,034.00
Total Other Uses of Funds				\$2,131,034.00
Total 5110 Debt Service				\$5,249,074.91

LEA : 125237603 Radnor Township SD

Printed 11/21/2016 8:33:52 AM

General Fund (10)

	<u>Elementary</u>	<u>Secondary</u>	<u>Federal</u>	<u>Total</u>
5130 Refund of Prior Year Revenues / Receipts				
800 <u>Other Objects</u>				
880 Refunds of Prior Years' Receipts				0.30
Total Other Objects				\$0.30
Total 5130 Refund of Prior Year Revenues / Receipts				\$0.30

LEA : 125237603 Radnor Township SD

Printed 11/21/2016 8:33:52 AM

General Fund (10)

	<u>Elementary</u>	<u>Secondary</u>	<u>Federal</u>	<u>Total</u>
5200 Interfund Transfers – Out				
900 Other Uses of Funds				
930 Fund Transfers				274,391.00
932 Capital Reserve Fund Transfers Applicable To Fund 32				5,898,223.00
Total Other Uses of Funds				\$6,172,614.00
Total 5200 Interfund Transfers – Out				\$6,172,614.00

LEA : 125237603 Radnor Township SD

Printed 11/21/2016 8:33:52 AM

General Fund (10)

5230 Capital Projects Fund Transfers

Elementary

Secondary

Federal

Total

900 Other Uses of Funds

932 Capital Reserve Fund Transfers Applicable To Fund 32

5,898,223.00

Total Other Uses of Funds

\$5,898,223.00

Total 5230 Capital Projects Fund Transfers

\$5,898,223.00

LEA : 125237603 Radnor Township SD

Printed 11/21/2016 8:33:52 AM

General Fund (10)

	<u>Elementary</u>	<u>Secondary</u>	<u>Federal</u>	<u>Total</u>
5240 Debt Service Fund Transfers				
900 <u>Other Uses of Funds</u>				
930 Fund Transfers				249,391.00
Total Other Uses of Funds				\$249,391.00
Total 5240 Debt Service Fund Transfers				\$249,391.00

LEA : 125237603 Radnor Township SD

Printed 11/21/2016 8:33:52 AM

General Fund (10)

5280 Activity Fund Transfers

Elementary

Secondary

Federal

Total

900 Other Uses of Funds

930 Fund Transfers

25,000.00

Total Other Uses of Funds

\$25,000.00

Total 5280 Activity Fund Transfers

\$25,000.00

Athletic / School-Sponsored Extra Curricular Activities Fund (29)

3000 Operation of Non-Instructional Services

Total

300 Purchased Professional and Technical Services

330 Other Professional Services

61,863.00

Total Purchased Professional and Technical Services

\$61,863.00

Total 3000 Operation of Non-Instructional Services

\$61,863.00

Athletic / School-Sponsored Extra Curricular Activities Fund (29)

3300 Community Services

Elementary

Secondary

Federal

Total

300 Purchased Professional and Technical Services

330 Other Professional Services

61,863.00

Total Purchased Professional and Technical Services

\$61,863.00

Total 3300 Community Services

\$61,863.00

Capital Reserve Fund - § 1431 (32)

2000 Support Services

Total

400 Purchased Property Services

430 Repairs and Maintenance Services

1,977,263.69

Total Purchased Property Services

\$1,977,263.69

700 Property

760 Equipment – Replacement

455,641.06

Total Property

\$455,641.06

Total 2000 Support Services

\$2,432,904.75

Capital Reserve Fund - § 1431 (32)

2600 Operation and Maintenance of Plant Services

Elementary

Secondary

Federal

Total

400 Purchased Property Services

430 Repairs and Maintenance Services

1,977,263.69

Total Purchased Property Services

\$1,977,263.69

700 Property

760 Equipment – Replacement

120,461.06

Total Property

\$120,461.06

Total 2600 Operation and Maintenance of Plant Services

\$2,097,724.75

Capital Reserve Fund - § 1431 (32)

2610 Supervision of Operation and Maintenance of Plant Services

Elementary

Secondary

Federal

Total

400 Purchased Property Services

430 Repairs and Maintenance Services

1,977,263.69

Total Purchased Property Services

\$1,977,263.69

700 Property

760 Equipment – Replacement

120,461.06

Total Property

\$120,461.06

Total 2610 Supervision of Operation and Maintenance of Plant Services

\$2,097,724.75

Capital Reserve Fund - § 1431 (32)

2619 Supervision of Operation and Maintenance of Plant Services – All Other Supervision

Elementary

Secondary

Federal

Total

400 Purchased Property Services

430 Repairs and Maintenance Services

1,977,263.69

Total Purchased Property Services

\$1,977,263.69

700 Property

760 Equipment – Replacement

120,461.06

Total Property

\$120,461.06

Total 2619 Supervision of Operation and Maintenance of Plant Services – All Other Supervision

\$2,097,724.75

LEA : 125237603 Radnor Township SD

Printed 11/21/2016 8:33:46 AM

Capital Reserve Fund - § 1431 (32)

2700 Student Transportation Services

Elementary

Secondary

Federal

Total

700 Property

760 Equipment – Replacement

335,180.00

Total Property

\$335,180.00

Total 2700 Student Transportation Services

\$335,180.00

LEA : 125237603 Radnor Township SD

Printed 11/21/2016 8:33:46 AM

Capital Reserve Fund - § 1431 (32)

2710 Supervision of Student Transportation Services

Elementary

Secondary

Federal

Total

700 Property

760 Equipment – Replacement

335,180.00

Total Property				\$335,180.00
Total 2710 Supervision of Student Transportation Services				\$335,180.00

LEA : 125237603 Radnor Township SD

Printed 11/21/2016 8:33:46 AM

Capital Reserve Fund - § 1431 (32)

2719 Supervision of Student Transportation Services – All Other Supervision

Elementary

Secondary

Federal

Total

700 Property

760 Equipment – Replacement

335,180.00

Total Property

\$335,180.00

Total 2719 Supervision of Student Transportation Services – All Other Supervision

\$335,180.00

Capital Reserve Fund - § 1431 (32)

4000 Facilities Acquisition, Construction and Improvement Services

Total

300 Purchased Professional and Technical Services

330 Other Professional Services

7,225.00

Total Purchased Professional and Technical Services

\$7,225.00

400 Purchased Property Services

430 Repairs and Maintenance Services

36,744.00

Total Purchased Property Services

\$36,744.00

600 Supplies

610 General Supplies

3,162,080.94

Total Supplies

\$3,162,080.94

Total 4000 Facilities Acquisition, Construction and Improvement Services

\$3,206,049.94

LEA : 125237603 Radnor Township SD

Printed 11/21/2016 8:33:49 AM

Capital Reserve Fund - § 1431 (32)

	<u>Elementary</u>	<u>Secondary</u>	<u>Federal</u>	<u>Total</u>
4600 Existing Building Improvement Services				
300 <u>Purchased Professional and Technical Services</u>				
330 Other Professional Services				7,225.00
Total Purchased Professional and Technical Services				\$7,225.00
400 <u>Purchased Property Services</u>				
430 Repairs and Maintenance Services				36,744.00
Total Purchased Property Services				\$36,744.00
600 <u>Supplies</u>				
610 General Supplies				3,162,080.94
Total Supplies				\$3,162,080.94
Total 4600 Existing Building Improvement Services				\$3,206,049.94

Other Capital Projects Fund (39)

4000 Facilities Acquisition, Construction and Improvement Services

Total

500 Other Purchased Services

520 Insurance – General

7,774.00

Total Other Purchased Services

\$7,774.00

600 Supplies

610 General Supplies

761,957.33

Total Supplies

\$761,957.33

Total 4000 Facilities Acquisition, Construction and Improvement Services

\$769,731.33

LEA : 125237603 Radnor Township SD

Printed 11/21/2016 8:33:50 AM

Other Capital Projects Fund (39)

4100 Site Acquisition Services – Original and Additional

Elementary

Secondary

Federal

Total

500 Other Purchased Services

520 Insurance – General

7,774.00

Total Other Purchased Services

\$7,774.00

Total 4100 Site Acquisition Services – Original and Additional

\$7,774.00

LEA : 125237603 Radnor Township SD

Printed 11/21/2016 8:33:50 AM

Other Capital Projects Fund (39)

4600 Existing Building Improvement Services

Elementary

Secondary

Federal

Total

600 Supplies

610 General Supplies

761,957.33

Total Supplies

\$761,957.33

Total 4600 Existing Building Improvement Services

\$761,957.33

	<u>General Fund(10)</u>	<u>Public Purpose Trust(27)</u>	<u>Other Compt Approved (28)</u>	<u>Athletic / Activity(29)</u>	<u>Capital Reserve (690, 1850)(31)</u>
1000 Instruction					
1100 Regular Programs - Elementary / Secondary	35,470,033.10				
1200 Special Programs - Elementary / Secondary	14,262,161.46				
1300 Vocational Education	152,951.38				
1400 Other Instructional Programs - Elementary / Secondary	14,716.79				
1700 Higher Education Programs	1,082,323.00				
Total Instruction	\$50,982,185.73				
2000 Support Services					
2100 Support Services - Students	3,176,248.98				
2200 Support Services - Instructional Staff	4,392,364.89				
2300 Support Services - Administration	5,249,913.99				
2400 Support Services - Pupil Health	1,068,513.61				
2500 Support Services - Business	952,140.35				
2600 Operation and Maintenance of Plant Services	7,854,699.57				
2700 Student Transportation Services	3,920,594.34				
2800 Support Services - Central	1,489,883.95				
2900 Other Support Services	75,442.72				
Total Support Services	\$28,179,802.40				
3000 Operation of Non-Instructional Services					
3200 Student Activities	1,213,084.14				
3300 Community Services	902.00			61,863.00	
Total Operation of Non-Instructional Services	\$1,213,986.14			\$61,863.00	
4000 Facilities Acquisition, Construction and Improvement Services					
4100 Site Acquisition Services - Original and Additional					
4600 Existing Building Improvement Services					
Total Facilities Acquisition, Construction and Improvement Services					
5000 Other Expenditures and Financing Uses					
5100 Debt Service / Other Expenditures and Financing Uses	5,249,075.21				
5200 Interfund Transfers - Out	6,172,614.00				
Total Other Expenditures and Financing Uses	\$11,421,689.21				
TOTAL ACTUAL EXPENDITURES & OTHER FINANCING USES	\$91,797,663.48			\$61,863.00	

	<u>Capital Reserve (1431)(32)</u>	<u>Other Capital Projects Fund(39)</u>	<u>Debt Service(40)</u>	<u>Permanent(90)</u>	<u>Total</u>
1000 Instruction					
1100 Regular Programs - Elementary / Secondary					35,470,033.10
1200 Special Programs - Elementary / Secondary					14,262,161.46
1300 Vocational Education					152,951.38
1400 Other Instructional Programs - Elementary / Secondary					14,716.79
1700 Higher Education Programs					1,082,323.00
Total Instruction					\$50,982,185.73
2000 Support Services					
2100 Support Services - Students					3,176,248.98
2200 Support Services - Instructional Staff					4,392,364.89
2300 Support Services - Administration					5,249,913.99
2400 Support Services - Pupil Health					1,068,513.61
2500 Support Services - Business					952,140.35
2600 Operation and Maintenance of Plant Services	2,097,724.75				9,952,424.32
2700 Student Transportation Services	335,180.00				4,255,774.34
2800 Support Services - Central					1,489,883.95
2900 Other Support Services					75,442.72
Total Support Services	\$2,432,904.75				\$30,612,707.15
3000 Operation of Non-Instructional Services					
3200 Student Activities					1,213,084.14
3300 Community Services					62,765.00
Total Operation of Non-Instructional Services					\$1,275,849.14
4000 Facilities Acquisition, Construction and Improvement Services					
4100 Site Acquisition Services - Original and Additional		7,774.00			7,774.00
4600 Existing Building Improvement Services	3,206,049.94	761,957.33			3,968,007.27
Total Facilities Acquisition, Construction and Improvement Services	\$3,206,049.94	\$769,731.33			\$3,975,781.27
5000 Other Expenditures and Financing Uses					
5100 Debt Service / Other Expenditures and Financing Uses					5,249,075.21
5200 Interfund Transfers - Out					6,172,614.00
Total Other Expenditures and Financing Uses					\$11,421,689.21
TOTAL ACTUAL EXPENDITURES & OTHER FINANCING USES	\$5,638,954.69	\$769,731.33			\$98,268,212.50

LEA : 125237603 Radnor Township SD

Printed 11/21/2016 8:33:57 AM

PSERS Salary Data (Salary Data should relate to the General Fund only)

Amount Description	Amount
Total Salary Base for salaries subject to PSERS withholding	41,787,126.46
Total Federally Funded salaries subject to PSERS withholding	180,317.18
	<hr/>

Title I Expenditure Data

Amount Description	Amount
Expenditures Funded with Current Title I Funds	175,717.00
Expenditures Funded with Carry over Title I Funds	14,635.00
	<hr/>
Total Title I Expenditure Data	\$190,352.00
	<hr/>

Title I ARRA Amount

Amount Description	Amount
Portion of Total Title I Expenditures funded with ARRA Title I	<hr/>

Benefits for Staff Relative to Collective Bargaining Agreements

	OBJECT	COVERED	NOT COVERED	TOTAL
10 General Fund				
	211 Medical Insurance	4,735,560.37		4,735,560.37
	212 Dental Insurance	331,665.81		331,665.81
	215 Eye Care Insurance			
	216 Prescription Insurance			
	271 Self-Insurance Medical Benefits	23,067.32		23,067.32
	272 Self-Insurance Dental Benefits			
	275 Self-Insurance Eye Care Benefits	31,277.82		31,277.82
	276 Self-Insurance Prescription Benefits	1,483,788.53		1,483,788.53
	FUND TOTAL	\$6,605,359.85		\$6,605,359.85
50 Enterprise Fund				
	211 Medical Insurance	87,108.57		87,108.57
	212 Dental Insurance	5,391.96		5,391.96
	215 Eye Care Insurance			
	216 Prescription Insurance			
	271 Self-Insurance Medical Benefits			
	272 Self-Insurance Dental Benefits			
	275 Self-Insurance Eye Care Benefits	1,236.96		1,236.96
	276 Self-Insurance Prescription Benefits	30,632.53		30,632.53
	FUND TOTAL	\$124,370.02		\$124,370.02
60 Internal Service Fund	No Self Insurance data to report			
	211 Medical Insurance			
	212 Dental Insurance			
	215 Eye Care Insurance			
	216 Prescription Insurance			
	271 Self-Insurance Medical Benefits			
	272 Self-Insurance Dental Benefits			
	275 Self-Insurance Eye Care Benefits			
	276 Self-Insurance Prescription Benefits			
	FUND TOTAL			
Total of All Funds		\$6,729,729.87		\$6,729,729.87

LEA : 125237603 Radnor Township SD

Printed 11/21/2016 8:33:58 AM

Function	Special Education (Prior Year)	Nonspecial Education (Prior Year)	Total (Prior Year)	Special Education (Current Year)	Nonspecial Education (Current Year)	Total (Current Year)
2120 Guidance Services	198,719.17	1,126,075.29	1,324,794.46	222,472.54	1,090,014.34	1,312,486.88
2140 Psychological Services	149,374.26	846,454.12	995,828.38	136,343.90	837,541.11	973,885.01
2150 Speech Pathology and Audiology Services						
2160 Social Work Services	29,266.53	165,843.68	195,110.21	27,621.76	169,676.51	197,298.27
2260 Instruction and Curriculum Development Services	244,092.83	1,383,192.69	1,627,285.52	245,255.34	1,228,027.82	1,473,283.16
2350 Legal and Accounting Services	156,801.87	97,279.06	254,080.93	94,098.93	177,424.40	271,523.33
2420 Medical Services	844.76	4,787.00	5,631.76	794.90	4,882.94	5,677.84
2440 Nursing Services	88,843.12	503,444.33	592,287.45	342,489.32	562,149.84	904,639.16
2700 Student Transportation Services	574,792.80	3,257,159.19	3,831,951.99	541,797.43	3,328,184.23	3,869,981.66
Total	\$1,442,735.34	\$7,384,235.36	\$8,826,970.70	\$1,610,874.12	\$7,397,901.19	\$9,008,775.31

(PRINCIPAL AMOUNTS ONLY)

ALL GOVERNMENTAL FUND TYPES

	Short-Term Borrowing	General Obligation Bonds/Notes	Authority Building Obligations	Other Long-Term Debt	Other Post-Employment Benefits (OPEB)	Compensated Absences	Net Pension Liability	Total
1. Debt at Beginning of Fiscal Year		92,390,000.00	8,347,407.00	282,610.00	580,320.00	483,006.00	120,413,625.00	222,496,968.00
2. Additional Debt Incurred During Year				71,362.00	87,900.00	302,623.00	14,526,707.00	14,988,592.00
3. Retirements and Repayments		1,830,000.00	94,649.00					1,924,649.00
4. Debt at End of Fiscal Year		90,560,000.00	8,252,758.00	353,972.00	668,220.00	785,629.00	134,940,332.00	235,560,911.00
5. Accreted Interest at End Of Fiscal Year								
6. Total Debt and Accreted Interest		90,560,000.00	8,252,758.00	353,972.00	668,220.00	785,629.00	134,940,332.00	235,560,911.00
7. Current Portion P&I - Due within 1 year		6,075,609.00	536,372.00	46,049.00	46,049.00	139,638.00		6,843,717.00
8. Interest Paid during current fiscal year		2,853,183.00	408,572.00					3,261,755.00

(PRINCIPAL AMOUNTS ONLY)

ALL PROPRIETARY FUND TYPES

	Short-Term Borrowing	General Obligation Bonds/Notes	Authority Building Obligations	Other Long-Term Debt	Other Post-Employment Benefits (OPEB)	Compensated Absences	Net Pension Liability	Total
1. Debt at Beginning of Fiscal Year							941,375.00	941,375.00
2. Additional Debt Incurred During Year							431,293.00	431,293.00
3. Retirements and Repayments								
4. Debt at End of Fiscal Year							1,372,668.00	1,372,668.00
5. Accreted Interest at End Of Fiscal Year								
6. Total Debt and Accreted Interest							1,372,668.00	1,372,668.00
7. Current Portion P&I - Due within 1 year								
8. Interest Paid during current fiscal year								

Total Principal and Interest Payments Made by Your School - All Funds

Function	Fund		Principal (910)	Principal (920)	Interest (830)	Total (Principal +Interest)	Misc Other Uses (990)
5110	10	General Fund	1,830,000.00	301,034.00	3,118,040.91	5,249,074.91	
5110	20	Special Revenue Funds					
5110	30	Capital Projects Funds					
5110	40	Debt Service Fund					
5110	90	Permanent Fund					
5120	10	General Fund					
5120	20	Special Revenue Funds					
5120	30	Capital Projects Funds					
5120	40	Debt Service Fund					

Total Debt Payments - Governmental Funds			\$1,830,000.00	\$301,034.00	\$3,118,040.91	\$5,249,074.91	
---	--	--	-----------------------	---------------------	-----------------------	-----------------------	--

Function	Fund		Principal (910)	Principal (920)	Interest (830)	Total (Principal +Interest)
5110	50	Enterprise Fund				
5110	60	Internal Service Fund				
5120	50	Enterprise Fund				
5120	60	Internal Service Fund				

Total Debt Payments - Proprietary Funds						
--	--	--	--	--	--	--

Bond Details
Governmental Funds

Debt Category	Debt Issue Date (MM/YYYY)	Principal Amounts Only			Debt at End of Fiscal Year	Current Portion Due Within One Year (Principal and Interest)	Interest Paid During Fiscal Year
		Debt at Beginning of Fiscal Year	Additions	Reductions / Repayments			
General Obligation Bonds/Notes – CIB	10/2012	9,870,000.00		5,000.00	9,865,000.00	366,833.00	292,920.00
General Obligation Bonds/Notes – CIB	05/2013	9,990,000.00		55,000.00	9,935,000.00	389,538.00	290,969.00
General Obligation Bonds/Notes – CIB	06/2014	14,240,000.00		215,000.00	14,025,000.00	1,880,441.00	566,841.00
General Obligation Bonds/Notes – CIB	06/2014	9,100,000.00		5,000.00	9,095,000.00	310,500.00	472,081.00
General Obligation Bonds/Notes – CIB	10/2014	5,860,000.00		5,000.00	5,855,000.00	271,927.00	167,898.00
General Obligation Bonds/Notes – CIB	12/2014	8,880,000.00		5,000.00	8,875,000.00	293,000.00	320,361.00
General Obligation Bonds/Notes – CIB	01/2015	15,325,000.00		1,540,000.00	13,785,000.00	1,861,000.00	516,200.00
General Obligation Bonds/Notes – CIB	04/2015	4,125,000.00			4,125,000.00	553,063.00	77,202.00
Authority Building Obligations – CIB	12/2010	1,416,667.00			1,416,667.00	97,424.00	97,424.00
Authority Building Obligations – CIB	12/2011	3,565,000.00			3,565,000.00	181,387.00	181,386.00
General Obligation Bonds/Notes – CIB	10/2000	15,000,000.00			15,000,000.00	149,307.00	148,711.00
Compensated Absences		483,006.00	302,623.00		785,629.00	139,638.00	
Other Post-Employment Benefits (OPEB)		580,320.00	87,900.00		668,220.00	46,049.00	
Other Long Term Debt/Liabilities		282,610.00	71,362.00		353,972.00	46,049.00	
Authority Building Obligations – CIB	08/2008	2,119,510.00		62,523.00	2,056,987.00	167,658.00	82,747.00
Authority Building Obligations – CIB	07/2014	1,246,230.00		32,126.00	1,214,104.00	89,903.00	47,015.00
Net Pension Liability		120,413,625.00	14,526,707.00		134,940,332.00		
Totals for Debt Entered:		\$222,496,968.00	\$14,988,592.00	\$1,924,649.00	\$235,560,911.00	\$6,843,717.00	\$3,261,755.00

Bond Details
Proprietary Funds

Debt Category	Debt Issue Date (MM/YYYY)	Principal Amounts Only			Debt at End of Fiscal Year	Current Portion Due Within One Year (Principal and Interest)	Interest Paid During Fiscal Year
		Debt at Beginning of Fiscal Year	Additions	Reductions / Repayments			
Net Pension Liability		941,375.00	431,293.00		1,372,668.00		
Totals for Debt Entered:		\$941,375.00	\$431,293.00		\$1,372,668.00		

General Fund (10)

Section 1: Tuition/Purchased Services as Reported within Expenditure Detail

	Amount
Tuition Reported in General Fund Expenditures 1000-560	5,936,893.72
Purchased Services in General Fund Expenditures 1000-594 and 1000-597	

Section 1 Total	\$5,936,893.72
------------------------	-----------------------

Section 2: Tuition Paid to Institution Types During Fiscal Year

	Tuition Paid For Nonspecial Education	Tuition Paid For Special Education	Total
1 1306 Institutions			
2 Institutionalized Children's Programs			
3 Juveniles Incarcerated in Adult Facilities			
4 Residential Treatment Facilities		1,425,046.26	1,425,046.26
5 Other Local Education Agencies		1,041,925.41	1,041,925.41
6 Brick and Mortar Charter Schools	69,436.19	12,491.50	81,927.69
7 Cyber Charter Schools	33,708.62	38,022.91	71,731.53
8 Career and Technology Centers	117,931.00	35,020.38	152,951.38
9 Approved Private Schools		1,407,751.65	1,407,751.65
10 PA Chartered Schools for the Deaf and Blind			
11 Private Residential Rehabilitative Institutions			
12 Juvenile Detention Centers	9,542.61		9,542.61
13 Special Program Jointures	1,082,323.00		1,082,323.00
14 Other Tuition Not Included Elsewhere In This Section		663,694.19	663,694.19
Section 2 Total	\$1,312,941.42	\$4,623,952.30	\$5,936,893.72

- 1 . Student Transportation Services for Educational Field Trips

- 2 . Student Transportation Services for Student Activities

- 3 . Rental of Vehicles for Student Transportation Services

- 4 . Capital Reserve Funds 335,180.00

Include only district-owned transportation expenditures paid from State or local money.
 DO NOT include federal expenditures or payments to contract service providers.
 Contracted transportation services should not be recorded on this schedule.

Food Service / Cafeteria Operations Fund (51)

3000 Operation of Non-Instructional Services

Total

100 Personnel Services – Salaries

100 Personnel Services – Salaries 427,371.00

Total Personnel Services – Salaries \$427,371.00

200 Personnel Services – Employee Benefits

210 Group Insurance – Contracted Provider 93,165.44

220 Social Security Contributions 32,563.22

230 PSERS Retirement Contributions 405,052.81

270 Group Insurance – Self-Insurance 31,869.49

290 Other Current Employee Benefits 1,492.38

Total Personnel Services – Employee Benefits \$564,143.34

300 Purchased Professional and Technical Services

300 Purchased Professional and Technical Services 3,562.46

350 Security / Safety Services 3,584.00

390 Other Purchased Professional and Technical Services 5,150.44

Total Purchased Professional and Technical Services \$12,296.90

400 Purchased Property Services

410 Cleaning Services 40,000.00

430 Repairs and Maintenance Services 23,191.01

Total Purchased Property Services \$63,191.01

500 Other Purchased Services

570 Food Service Management 46,291.63

580 Travel 897.42

Total Other Purchased Services \$47,189.05

600 Supplies

610 General Supplies 49,205.09

630 Food 802,348.21

Total Supplies \$851,553.30

700 Property

740 Depreciation 20,566.00

760 Equipment – Replacement 25,685.10

Total Property \$46,251.10

Total 3000 Operation of Non-Instructional Services \$2,011,995.70

Food Service / Cafeteria Operations Fund (51)

	<u>Elementary</u>	<u>Secondary</u>	<u>Federal</u>	<u>Total</u>
3100 Food Services				
100 Personnel Services – Salaries				
100 Personnel Services – Salaries				427,371.00
Total Personnel Services – Salaries				\$427,371.00
200 Personnel Services – Employee Benefits				
210 Group Insurance – Contracted Provider				93,165.44
220 Social Security Contributions				32,563.22
230 PSERS Retirement Contributions				405,052.81
270 Group Insurance – Self-Insurance				31,869.49
290 Other Current Employee Benefits				1,492.38
Total Personnel Services – Employee Benefits				\$564,143.34
300 Purchased Professional and Technical Services				
300 Purchased Professional and Technical Services				3,562.46
350 Security / Safety Services				3,584.00
390 Other Purchased Professional and Technical Services				5,150.44
Total Purchased Professional and Technical Services				\$12,296.90
400 Purchased Property Services				
410 Cleaning Services				40,000.00
430 Repairs and Maintenance Services				23,191.01
Total Purchased Property Services				\$63,191.01
500 Other Purchased Services				
570 Food Service Management				46,291.63
580 Travel				897.42
Total Other Purchased Services				\$47,189.05
600 Supplies				
610 General Supplies				49,205.09
630 Food				802,348.21
Total Supplies				\$851,553.30
700 Property				
740 Depreciation				20,566.00
760 Equipment – Replacement				25,685.10
Total Property				\$46,251.10
Total 3100 Food Services				\$2,011,995.70

	<u>Food Service(51)</u>	<u>Child Care Operations(52)</u>	<u>Other Enterprise(58)</u>	<u>Internal Service(60)</u>	<u>Total</u>
3000 <u>Operation of Non-Instructional Services</u>					
3100 Food Services	2,011,995.70				2,011,995.70
Total Operation of Non-Instructional Services	\$2,011,995.70				\$2,011,995.70
TOTAL ACTUAL EXPENDITURES & OTHER FINANCING USES	\$2,011,995.70				\$2,011,995.70